

## **NEWSLETTER OF THE LAHAINALUNA HIGH SCHOOL FOUNDATION KA LEO O KE KAHUA O LAHAINALUNA**

### **Support the Foundation through the Charity Walk**

Aloha and Mele Kalikimaka!!! It is a great honor and privilege to serve as a new committee member for the Lahainaluna High School Foundation. There is nothing more important to our family than to ensure the very best for the young men and women growing up in our very special community, and serving here is a blessing and responsibility that we look forward to very much!

The Foundation has been fortunate for several years to have had our operational expenses met by the revenue generated by the stadium. Because of that, we were able to provide a high level of funding for grants to the clubs, teams and student groups on campus. In order to meet our operational expenses and continue to fund the needs of our students, the Foundation needs to expand our revenue streams.

Every year the Maui Hotel & Lodging Association puts on the Visitor Industry Charity Walk for all non profit organizations in Maui County to participate in. The Lahainaluna Foundation is going All In! This event has a matching funds component to it so every penny we raise will be matched by as much as 20%. In other words, if we were able to raise \$100,000.00, we may get as much as \$20,000.00 in matching funds. The Charity Walk event is held in May of 2017, so we have several months to reach our goal (TBD).

There are 2 ways for you to help.

1. You can go out and raise money in pledges (sponsors from people in your family, friends and work network ) and come walk with us in May. If you're off island, you can still raise money and send it in and one of our directors will carry your donation for the 3.5 mile walk.
2. You can donate to the event by sending a check and it will go toward our goal. You can also pledge to give monthly, between now and then, to help us reach our goal. No amount is too small, nor too Big!

We are excited about this event that will go a long way to help us fulfill our mission. If you're interested in assisting with this effort, call us at 808-661-5332 and we will send you the fundraising documents and give you ideas and help.

Let's do this for the kids, LUNAS 4 LIFE!!!

Dan Williams, Development Committee Member



### **Mission Statement**

*E kako'o I ko Lahainaluna ma o na mea e ho'olako pono ai*

*SUPPORT the Lahainaluna school community by providing opportunities and resources*

*E kokua I ka malama 'ana a me ka ho'omau 'ana i ko Lahainaluna mo'aukala, kona mo'omeheu, a me kona mau loina*

*ASSIST in preserving and perpetuating Lahainaluna's unique history, culture and traditions*

## You Can Become a Legacy Donor

Just imagine: YOU can support future generations of LHS students by becoming a legacy donor. Anyone who names Lahainaluna High School Foundation in a will, trust, or insurance arrangement may become a member of the Lahainaluna High School Foundation Legacy Program. The Foundation has been fortunate to have a few individuals make this commitment and we encourage more to do so. One of 2 recent donors was Kenneth N. Sharpe, of Lahaina, whose financial representative notified us that Kenneth had bequeathed his investment account to the Foundation. We were unaware of the impending gift and it was very humbling that he had committed to a gift to our organization. Another, Harold P.K. Wong, Class of 1943, became a part of our Legacy Program last year when he advised us that he was including the Foundation in his estate plan. We are humbled again that we will be remembered in this way.

Planned estate gifts can have a huge impact on charitable organizations like the LHS Foundation, and it doesn't take much time or money to arrange. One doesn't have to be wealthy to make a significant contribution to make a real difference for Lahainaluna.

One of the easiest ways to make a meaningful gift to Lahainaluna High School is through a planned gift arrangement. A bequest can be made through (1) a will in the form of a gift of a specific dollar amount, (2) a piece of real property, (3) stocks or securities, (4) a percentage of the entire estate, or (5) even making the Foundation a beneficiary of one's life insurance policy.

Through planned giving, donors and their families get the satisfaction of leaving their legacy where they feel it matters the most. If you are considering making such a bequest, set up an appointment with your financial advisor, attorney, or contact the Foundation directly. The LHS Foundation thanks you for your support.

## New Directors & Committee Members



In May of 2015, the Board welcomed Joel Navarro to its ranks. While his name was posted in last year's newsletter board list, and is included in our Board Member section on our website, we had not yet posted his bio in the newsletter. Joel is the Lahaina Branch Manager for Title Guaranty Escrow Services, Inc., and has been employed with TG since 2004. He has been living on Maui since 1993. He and his wife, Jaime, have two sons, Joa and Jaxon. Joel is the chairman and founder of the Title Guaranty Legacy Cup Golf Tournament. This annual event raises funds for Lahainaluna High School's Project Graduation. Joel is also on the Board of Directors for the Lahaina Junior Golf Association.



Blaine Bernades, Class of 2003, joined the board in March of this year. When he attended LHS, Blaine was a varsity baseball player who went on to play at the collegiate level and coached the LHS baseball team for three years. Blaine is an independent agent with Pyramid insurance in Kahului. He is married and has one son, Jaden. Born and raised in Lahaina, he attended Kamehameha III and Lahaina Intermediate School before attending LHS.



Welcome Chuck Yeaman to the Foundation! Chuck will be serving on the Finance Committee, and is a 2005 LHS grad. Chuck is the Bank of Hawaii-Kahana, Branch Manager



We also welcome Dan Williams. Dan will be serving on the Development Committee. Dan runs Westside Hoops and is the father of five.

## Tournament of Champions

by Nancy Cross

Featuring only winners from the previous year on the PGA TOUR, the Tournament of Champions kicks off each year with one of the most exceptional fields in golf at Kapalua's Plantation Course. Scheduled for January 4 – 8, 2017, this prestigious tournament provides 60+ hours of live and replay telecast hours on The Golf Channel/ NBC showcasing the beauty of Hawaii to millions of television viewers.



A great event for the family as youth 18 and under are offered FREE grounds admission. Tickets start at \$15 and are now on sale at [pgatour.com/toc](http://pgatour.com/toc). Free public parking will be located at the Lahaina Civic Center with shuttles bringing spectators to and from the course.

Since 1999, the tournament and its host organizations have donated over \$5.6 million to Hawaii's non-profit organizations. The Lahainaluna High School Foundation has participated as a designated beneficiary since 2005 so we urge all our supporters to attend the Tournament of Champions!

## Stay In Touch with LHSF

Every year, we lose contact with many of our supporters. In order for the Foundation to keep sending you the newsletter, and to help us control the cost of return postage charges, please keep us in mind if you change your address. Use our website's Contact Form to update your contact information.

Another cost saving measure we have adopted is to mail out only one copy to multiple supporters who reside at the same address. Please excuse us if your name is not on the copy that comes to your house. If you would like a separate copy, please contact us through our email address; [lhsfoundation@hawaiiantel.net](mailto:lhsfoundation@hawaiiantel.net), or use the contact form on the website.

Also, if your newsletter is addressed to Resident, it is because our database indicated that there were multiple names at one address. Once again, if you wish to receive your own copy, please contact us.

There are times that we would like to reach out to you, by phone, or email. Please take the time to update your information by filling out the contact form on our website. MAHALO.

## 2016 Class Challenge

by Rob Shelton

The 9th LHS Class Challenge was held on July 16, 2016 at the Hawaii Prince Country Club. What strikes me most about this event is the terrific camaraderie Lahainaluna has with its alumni and supporters. Everyone is very enthusiastic and supportive. This year I had the pleasure of participating in the "SOME CLASS" team category with 1973 grads Gregg and Joyce Wada, and Lee Ann Shigezawa and it was another great day.



OLDEST ALL CLASS— Class of 1952, (L to R) Charles Araki, Clifford Yoshida, James Kumagai, George Enriques

It takes a concerted effort to put on an event like this, and we are grateful for the hard work of Earl Ichimura, Eric Okazaki, Mike Miyamoto, all of the volunteers, sponsors and prize donors. On behalf of the Foundation, I was grateful for another opportunity to update all present about the Foundation's progress this year and what we are collectively trying to do to benefit our school. Earl Ichimura presented the Foundation with a check for \$17,100.00,

bringing the nine-year total to \$146,175.00!! Thank you again for another awesome "FUN-RAISING" event.

The next Class Challenge will be held on July 17, 2017, at the Hawaii Prince Country Club, and will mark a milestone anniversary of this great event. We encourage all those who can to participate. If you are unable to attend, consider becoming a tee sponsor or donor.



ALL CLASS 1962: (L to R) Alan Kawaguchi, Thomas Fujita, Noosh Nishihara, Gerald Ichiki

## Lahaina Loses Former LHSF Board Member

On February 27, 2016, former LHSF board member and Alumni Committee Chair, Alex Ross, passed away. Alex was born and raised in Lahaina, this historic insti-graduation, Alex Marine Corps and for 20 years. Alex 1977 and went to Regency. Alex from 2005-2010.



and graduated from tution in 1956. After enlisted in the was a career Marine returned to Maui in work for the Hyatt served on the board



## Lahainaluna High School Foundation Scholarship Program In Its 15th Year

Lahainaluna High School hosted the 2016 Scholarship Awards Program on May 7th in the cafeteria, Hale Pa'ina. Lahainaluna High School Foundation participated by awarding the following scholarships: (Photos courtesy Jon Shigaki)



The \$1,000 **Maureen Setsuko Ariyoshi Memorial Scholarship** was awarded to Kaylee Harmon. Former LHS Principal Henry Ariyoshi and his son, Reed, presented the award to Kaylee's father, Dennis.



The inaugural \$1,000 **Luly Baker Scholarship** was awarded to Trystin Kalua. Mrs. Baker is a former teacher at Princess Nahi'ena'ena Elementary School.



Lahaina Branch Manager Ann Neizman presented the \$1,000 **Bank of Hawaii Scholarship** to Michael Serafica.



The \$1,000 **Boss Frog's Dive & Surf Scholarship** was awarded to Kamal-Craig Golaube. Zac LaPrade Presented.



Board member Susan Yap presented the \$750 **Central Pacific Bank-Lahaina Branch Scholarship** to Krystalynn Han.



**Mark & Judy Ellman** presented their \$500 inaugural scholarship to Mikino Kumagai.



Receiving this year's coveted **Front Street Scholarship** (up to \$33,775-renewable) was Angel "Max" Becerra. (visit the website for the list of renewed scholarships)

(L to R) Connie Sutherland, Leslie Hiraga, Max Becerra, Jon Visitacion



The \$1,000 **Ebrahim Gabbay, MD. Memorial Scholarship** was awarded to Bridgette Cuaresma. Lydia Saribay presented.



The \$2,000 **Kihachiro J Hotta Memorial Scholarship** was presented to Natasha Currence by board member Nancy Cross.



Three \$1,000 **"Blackie" Gadarian Vocational Scholarships** were presented to Junior Moala, Andrew Vicente and Jakob Opunui.

(L to R) Sara Gadarian, Junior Moala, Andrew Vicente, Jakob Opunui and Gary Kepner.

The 2016 recipient of the \$10,000 **Shigeru & Toyoko Ichiki Endowed -Renewable Scholarship** was Kathleen Yagyagan. (visit the website for the list of renewed scholarships)

(L to R) Gerald Ichiki, Candace Hanneman, Lily Tran, Aida Gazman, Kathleen Yagyagan)



## 2016 Scholarships (cont)



The \$500 **Ilocandia Filipino Store Scholarship** was presented to Kyri Parana. Lydia Saribay presented.



Board member Rob Shelton presented the final \$2,000 **Fred Izumi '52 Legacy Scholarship**. This scholarship was funded by a 10-year annuity and started in 2007. Calen Matsuda was the recipient.



The \$1,000 **Ka'anapali Land Management Corp Scholarship** was presented to Blaine Casil. Board member Rob Shelton presented.



The \$1,000, **Ka Ipukukui 'A Mau Pio 'Ole i Ke Kaua'ula Scholarship** returned this year, thanks to the donor, former LHS Principal Mike Nakano. Board member Susan Yap presented the award to Jasmyn Swangel.



The \$1,000 **Sgt. James Kusuda Memorial Scholarship** was awarded to Jacob Mahon and presented by May Fujiwara.



The \$1,000 **Lahainaluna Boarders Association Scholarship** went to Jakob Mahon. Presenting the award was LHSF Board VP and LBA President, Craig Murakami.



There were two inaugural \$500 **Lahaina Fish Co. Restaurant Scholarships** presented to Michael Doan & Kylie Salvador.

(L to R) Chris Berle, Kylie Salvador, Shawny Labrador, Michael Doan



The \$500 **Lahaina Hawaiian Civic Club Scholarship** returned this year, and Daryl Fujiwara ('01) presented the award to Kylie Salvador.

The \$500 **Holly & Rob Manning—Homes & Land Magazine of Maui Scholarship** was presented to Tiffany Nguyen. Tiffany was unable to attend the awards ceremony.



Four, \$1,000 **LHSF Scholarships** were awarded by the Foundation again this year.

(L to R) Board Secretary Nancy Cross, Kelia Stecker, Asti Arcangel, Fritz Ruiz, August Guest, Board member Rob Shelton.

The \$5,000, renewable **Makana Aloha Foundation Scholarship** was presented to Mike Nguyen. Receiving renewals were Haley Robb and Nicole Aceret. (visit the website for the list of renewed scholarships)

(R to L) Curtis & Julie Robb, Joanna Aceret, Gunars Valkirs, Mike Nguyen, Jami Burk, JoRene Valkirs.



The \$750 **Mint Green House Scholarship** was presented by Princess Karen Galano ('09) to Jared Matias.



The inaugural \$1,000 renewable, **Na Hoalohe Eklou Scholarship** was awarded to Tikki Bisbee. James Cacal presented.



## 2016 Scholarships (cont)



The \$500 **RVN Restaurant Scholarship** was awarded to Emerald Lynch. Lydia Saribay presented.



The \$1500 **Roy & Betty Sakamoto Renewable Scholarship** was awarded to Makenna Stockham. (visit the website for the list of renewed scholarships)

(L to R) Roy Sakamoto ('60), Anis Bel, Michele Howins, Joanna Stockham and Mrs. Galuardo.



The \$1,000 **Alfredo "Fred" Sarian Memorial Scholarship** was presented to Anis Bel. Board member Susan Yap, presented.



The \$2,500 **Steven R. Strong Memorial Scholarship** was awarded to Joanna Aceret. (L to R) Jeanne Smythe, Joanna Aceret, Sohny Strong.



The \$1,000 **H & K Take-naga Legacy Scholarship** was awarded to Dylan Berzabel and was presented by Kristina Toshikiyo.



The \$1,000 **Territorial Savings Bank Scholarship** was awarded to Haleigh Berko and was presented by branch manager, Ryan Fukushima.



The \$1,000 **Masters at Ka'anapali Hillside-Blaze Kalilikane Memorial Scholarship** was awarded to Justin Inovejas. (L to R) Lois Ross, Brittney Kalilikane, Justin Inovejas, Roger Ross.



**TS Restaurants** presented (4) \$1,000 scholarships from their West Maui restaurants; Duke's, Kimo's, Leilani's & Hula Grill. (L to R) Jack Starr, Jason Donez, Kaile Kron, Caylyn Villatora, Caitlyn Villatora, Danielle Sullivan, Amber Allen & Orin Cross.



The \$1,000 **Tournament of Champions Scholarship** was awarded to Jarret Pascual by Nancy Cross.



The \$500 **Valley Isle Community FCU Scholarship** was awarded to Jasmyn Swangel and presented by Lahaina Branch Manager, Diana Oasay.



The \$1,000 **Matsue and the late Hisao Fujii Teacher Recognition Award** was presented to Cassie-Ann Jacinto.



The \$1,000 **Dr. James Kumagai Teacher Scholarship** was awarded to Arica Lynn.

## Your Donations at Work!!

### **Jimmie H. Greig Gym** by Genevive Ruvald

Members of the Lahainaluna Basketball Program and Westside Hoops took on the tremendous task of organizing the cleaning and painting of the Jimmie Grieg Gym at LHS this past summer. It was sparked by one of the coaches who saw the potential and began the process of improving the look of this proud building. The project started back in January and work commenced on Friday, July 15th. Many of the Luna athletes helped with prep work and cleaning, and became a passion project for most of the workers and volunteers.



Once, the dominant colors were ivory and brown, but now show the white and red of the school colors... so powerful, that you feel the pride of Lahaina as you walk in the doors. The Lahainaluna High School Foundation came to the rescue to help fund this immense but necessary project. With relationships already built and continuously forming, the community stepped up to assist in this job.



When people enter the gym, we want them to feel the energy, the community and the pride of Lahainaluna! This project has impacted many already and those who get to play within these walls can experience a true home gym. Some have invested more than others, and all the young men and women who have helped, the painters and workers giving their time and those in the community who support these kids can look back on these 2 weeks for years and years to come knowing they made a difference.

### **New Lahainaluna Baseball Infield**

by Blaine Bernades



The Lahainaluna Baseball team was the only team Division 1 baseball team in the M.I.L. that did not have an on campus practice facility. The baseball team has always transported a handful of student athletes to the Lahaina Recreation Center baseball fields for practice. This is no longer the case. With a grant from The Lahainaluna High School Foundation and the approval from school administrators the baseball team will have a place to call home. The auxiliary field adjacent to the Physical Education building has long been dreamt of a practice facility for softball or baseball teams.

After the construction of Sue Cooley Stadium the baseball team went to work trying to make this dream a reality. Labor donations from several local companies as well as work from coaches and players went on for months and continue to this day. The grant provided to the baseball team from the Lahainaluna Foundation went towards the installation of a fence that borders the field ensuring not only the safety of the student athletes but allowing the baseball team to hold full practices. Once completed, Lahainaluna will have a full size infield where the team will be able to take a full infield practice. There is also additional space for other practice drills as well as bullpens and a batting cage. With this facility, the program will try to revive the rich tradition of baseball in West Maui that goes back to the plantation days.



**MAHALO TO OUR DONORS**  
**Nov. 1, 2015 to Oct 31, 2016 (cumulative)**

**Hoku o ka Pakipika \$1,000,000 and above**  
Sue D. Cooley

**David Malo \$100,000 to \$999,000**

Shoma Hotta  
Shigeru & Toyoko Ichiki Endowed Scholarship  
LHS Class Challenge  
The Makana Aloha Foundation  
Tournament of Champions

**Pu'u Pa'uPa'u \$1,000 to \$49,000**

Clifton & Pat Akiyama ('62)  
Susan Antoku ('60)  
Mutsuo Aoyama ('56)  
Tanya Arakawa ('68)  
Henry Ariyoshi  
Roz Baker  
Bank of Hawaii  
Charles Barnum  
Central Pacific Bank  
Class of 1961  
Class of 1966  
Class of 1969  
Nancy Cross  
Duke's Beach House  
Wallace Fujii ('54)  
Sanae Fujimoto ('52)  
May Fujiwara ('50)  
Suzanne Gabbay  
Wayne Hirata ('67)  
Harold Hirokane ('54)  
Lynette Holmes ('73)  
Henrietta Hudson ('38)  
Hula Grill  
Vernon Ichimura & Susan Sato ('70)  
Hisashi Ito ('54)  
Ka'anapali Land Mgmt  
Glenn Kadohiro  
Lena Kanemitsu ('61)  
Brian Kelly  
Anthony Kikuyama ('53)  
Kimo's Restaurant  
Dr James Kumagai ('52)  
Andrew & Mildred Kutsunai  
Lahainaluna Boarder's Assoc  
Leilani's  
Tad & Cindy Luckey  
Betty Lum ('55)  
Eleanor Martin  
Masters @Kaanapali Hillside  
Robert S Matsumoto  
Jean Miyahira ('58)  
Lyle Miyasaki ('80)  
Ralph Murakami  
Na Hoaloha Ekolu

**Pu'u Pa'uPa'u \$1,000 to \$49,000 (cont)**

Michael Nakano  
Richard Noosh Nishihara  
Stanley & Joyce Okinaka ('57)  
Ed & Penny Okubo ('63)  
Jim & Jeanne Riley  
James & Martha Robinson  
Jeff & Jan Rogers  
Carol & Edwin Saito ('70)  
Roy ('60) & Betty Sakamoto  
Chad Santiago ('97)  
Rob & Louisa ('73) Shelton  
Harriet Sakai Shima ('50)  
James & Carol Spaulding  
Sohny Strong  
David Takahashi  
Gene Takenaga  
Eugene Takenaga  
Jean Tengan ('54)  
Territorial Savings Bank  
Lanny Tihada ('66)  
Gary & Alma ('70) Yoshimori  
Valley Isle CFCU

**Torchbearer's \$500 to \$999**

Class of 1973  
Thelma Ichiki Christison ('49)  
Eileen Domingo ('05)  
Mark & Judy Ellman  
Michael S. ('54) & Claire Y. ('56) Furukawa  
Edith Harada  
Jefferson Hodge ('83)  
Gordon Ito ('63)  
Jane Ito ('61)  
Doris Ito ('59)  
Craig & Jan Kakiuchi ('76)  
Virginia Keen  
Lahaina Fish Co.  
Lahaina Hawaiian Civic Club  
Harold H Lusano ('58)  
June Marugaki ('54)  
Josephine Matsu ('61)  
Ann Mikami ('56)  
Jyun & Mary Mishima ('70)  
Michael Miyabara ('68)  
Grace Miyamoto ('55)  
Dalton & Karen Murayama ('62)  
George & Alma Nagao ('51)  
Edwin & Carol Saito ('70)  
Dane Sakaida ('74)  
Servco Foundation  
Aileen Shimokochi ('49)  
Karen Takata ('68)  
Thelma Tenga ('48)  
James Tobita ('50)



## Donors (cont)

### Torchbearer's \$500 to \$999 (cont)

Susan Wilson ('64)  
Letitia Yamada ('61)  
Anthony Yasutake ('55)

### I mua \$100 to \$499

Kyle Agawa ('79)  
Hisashi Araki ('49)  
Blaine Bernades ('03)  
Charlotte S Cawley ('54)  
Karen Christenson ('79)  
Anne Cook  
Joanne Dennis  
Jasmine Domingo ('12)  
Aileen Fujitani ('59)  
Princess Karen Dela Cruz Galano ('09)  
Mike & Sandie Gallagher  
Teri Hamasaki  
Marion Harlan  
Ronald Hayashi ('59)  
Howard Hedani ('68)  
Richard M Hirata ('53)  
Sharon Honda ('71)  
Muriel M Hughes ('67)  
Charles Ige ('53)  
Joe Imai ('54)  
Shigenobu Inouye ('49)  
Jean Isakson ('56)  
Wallace Ishikawa ('61)  
Martha Ito Fukunaga ('59)  
Lani Johnson ('68)  
Richard Kahoalii ('66)  
George Kahumoku, Jr  
Carl Kaiama ('51)  
Geraldine Kaita ('45)  
Amy Kennett  
Jean Kohno ('45)  
Barbara Koshiyama ('57)  
Masami Kurihara ('56)  
Paul & Margaret Lansky  
Janet Lendio  
Mac & Laurie Lowson  
Douglas Makekau ('60)  
Dorothy Makekau ('55)  
Setsuko Mendes ('45)  
Stan Miyahira ('56)  
Alton Miyamoto ('68)  
Antonia Molina ('77)  
Caitlin Moon ('06)  
Craig Murakami ('71)  
Lester Nakamoto ('84)  
Lynn S Nakamura ('70)  
Joel Navarro  
Warren Oda  
Sakae Okuda ('48)  
Jim & Rene (Sodetani) Provines ('55)

### I mua \$100 to \$499 (cont)

Spring Rhodes ('96)  
Gary & Barbara Robert  
Jessie (Arthur) Sakai ('55)  
George Sanborn  
Sadao Shimabukuro ('45)  
Glenn Shishido ('72)  
Ann Suzawa ('49)  
Shirley Tabata Ponomareff ('59)  
Laura Taua  
Greg Uyematsu ('68)  
R. Van Dine  
Yasuko Velligas ('44)  
Walter Vierra ('85)  
Donald & Karen ('50) Watanabe  
Kenneth Yamamoto ('68)  
Larry Yokoyama ('53)  
Kenneth Yonamine ('63)  
Lee Ann Shigezawa ('73)  
Family of Ethel Yano  
Francis Berg Zaman

### Pride & Spirit \$1 to \$99

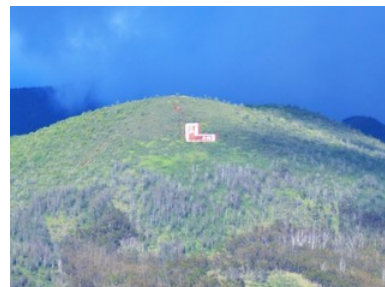
Diana Abilay  
Martin Kato ('47)  
Leslie Akiyama ('68)  
Clemencia Alcaez ('68)  
Eugene Baybaydo ('64)  
Norman Morinaga ('59)  
Marion Muller  
Renee Namahoe ('68)  
Ester & Robert Quon  
Milton ('72) & Marianne ('75) Rickard  
Laura Tenma  
Charles ('05) & Amber Yeaman

### Benefit Mobile Participants

Blaze Rogers ('07)  
Jan Rogers  
Jeff Rogers  
Kea Rogers ('04)  
YeeNing Tay ('99)

### Legacy Donors

Kenneth N. Sharpe (1934-2013)  
Harold P.K. Wong



### LHSF Seeks to Restore Cemetery

The last time the LHS Cemetery was restored was in 1929. The Arts, History & Culture Committee is seeking to change that by making some improvements; fixing the existing irrigation system, installing gravel walkways, improving access, and bringing in low maintenance landscaping.



As current funding for this project is currently limited, we are looking for a local landscaper who can provide some guidance and materials estimate, either pro bono, or at a reduced fee.

Please contact the Foundation if you would like to assist with this project.



### Music Department in Need of Instruments

The Foundation recently received a grant request from Mr. Carlos, the LHS Band Director. The band was experiencing a surge in interest and due to the influx of so many students, they do not have enough instruments to fill the need. The Foundation was unable to provide the kind of funding that was needed, so we are doing all we can to assist in other ways. We have made appeals on our eNews, asking for either monetary, or we have only been able to requested funds, and only one Facebook and Twitter sites, instrument donations. So far, raise a fraction of the instrument has been donated.

If the band holds a special support this cause. Donations appreciated. Contact the Foundation on the website, or just give.



The LHS Marching Band at the 2016 Homecoming game. Photo courtesy of Jon Shigaki)

place in your heart, please help of instruments are also donation through the contact use the Donate Now button to

### Paving the Way to Stadium Success



Even though the stadium construction is over, funding for maintenance issues will always be present. Harold Hirokane ('54) made a significant stride towards supporting the future needs of the stadium through his generosity last year.

While ALL our donors are important, I just wanted to share the story of this gift from Harold, an annual donor, who called and inquired about getting a brick paver for his entire class. I told him that we couldn't fit all the names on one brick..he informed me that he wanted a brick for EACH of his 120 classmates!! That's Harold in the picture, on a recent trip to Lahaina, standing by the brick pavers he dedicated to his classmates!!

## Legends of Lahainaluna

The *Legends of Lahainaluna* is the Foundation's signature event that honors individuals and businesses who have made significant contributions to the success of Lahainaluna. We were fortunate to be able to honor former principal, **Mike Nakano**, as the Individual Award recipient. Mike retired in 2010, after serving as principal for 15 years. Mike received emotional words of praise from Board Member Rob Shelton, Acting Principal Joanne Dennis, Pastor Chris Martin and emcee, Ke'van Duduoit.



**TS Restaurants**, with four restaurants on the west side, was the Business Award recipient. The philanthropy of TS is well-known in the Lahaina community. TS has provided four (4) \$1,000 scholarships to LHS grads for eight (8) years and has donated gift certificates for our fund raising events since 2002.



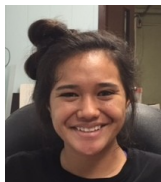
The Posthumous Award went to **Reverend Sheldon Dibble**, one of the original teachers at the Lahainaluna Seminary. As fate would have it, Will Fleishell, the great-grandson (x5), of Rev. Dibble, visited Dibble's grave on campus earlier in the year, we were able to contact him, and he received the award via video.

We look forward to next year's event and hope that you can join us for this always memorable event.

## Student Advisory Committee

The Student Advisory Committee assists the Executive Director with printed and social media content and providing the Foundation with a student conduit.

### Aiyana Galletes



I am from the island of Hawaii, currently attending Lahainaluna as a fourth year boarding student. I became a member of the Student Advisory Committee because it was founded on and perpetuates values that I admire. I love how much this organization does for the school and the community and hope to be a part of this great tradition. My goal for this year is to generate as much support and sponsors as possible. This is important to me because I want to create as many opportunities as I can for Lahainaluna students.

### Leo Amby



I'm a Junior and a Boarder from the island of Lana'i. The two sports I play are football and baseball. My main goal after high school is to attend and graduate from University of Washington and earn a Bachelor's degree in computer engineering. The reason why I want to be a part of the student committee is to give back to the community.

### Ethan Kaleiupu



I was born on Maui and am currently a senior at LHS. I'm excited to become a member of the Student Advisory Committee because my heart is in this school. I have strong ties here and the community due to several members of my immediate family graduated from this school. I would love to do what I can do to help better this amazing school and keep its traditions going.





US POSTAGE PAID  
NON PROFIT  
MAILED FROM  
ZIPCODE 96761  
PERMIT NO. 5

***PERPETUATING THE TORCH OF EXCELLENCE***

Box 11617  
Lahaina, HI 96761  
Phone: 808-661-5332  
Fax: 808-442-9053  
E-mail: [lhsfoundation@hawaiiantel.net](mailto:lhsfoundation@hawaiiantel.net)  
[www.lahainalunahighschoolfoundation.org](http://www.lahainalunahighschoolfoundation.org)

***Return Address Requested***

**Board of Directors**

Mark Tillman-President  
Craig Murakami-Vice President  
Nancy Cross-Secretary  
Steven Raymond-Treasurer  
Myrna Ah Hee  
Blaine Bernades  
Lester Nakamoto  
Joel Navarro  
Betty Sakamoto  
Rob Shelton  
Nestor Ugale, Jr.  
Susan Yap

**Staff**

Jeff Rogers-Executive Director  
Stephanie Ross-Bookkeeper

**Perpetuating the Torch of Excellence...**

The Lahainaluna High School Foundation is a non-profit, 501 (c)(3) organization, founded by a group of community members and alumni whose vision was to provide resources and opportunities and preserve and perpetuate Lahainaluna's culture and traditions, that will promote excellence in the high school experience at Lahainaluna.

There are **many ways** that you can help and continue to **make a difference**. In-kind contributions help make a positive impact, as do monetary donations which can be directed to the areas of your choice, or wherever the need is greatest.

Consider making a gift, no matter how much or how little. Contact the LHS Foundation for more information. All contributions are appreciated. I MUA, Lahainaluna! MAHALO!!

Visit our website  
Like us on Facebook  
Follow us on Twitter  
Subscribe to our eNews