

NEWSLETTER OF THE LAHAINALUNA HIGH SCHOOL FOUNDATION

KA LEO O KE KAHUA O LAHAINALUNA

Fires Threaten Lahainaluna During Hurricane Lane

Without a doubt, the biggest story of the year for Lahainaluna and the surrounding community would be the fires that occurred in West Maui during Hurricane Lane in August.

More than 2,000 acres, 20 homes and 29 cars were lost to the blaze.

The fires were the result of downed power lines and poles caused by the intense wind created by the hurricane.



Principal Kaho'ohalahala surveys the burned areas around campus. Courtesy Matt Thayer and Maui News.

In an interview with the Maui News, the Principal remarked, "Not one building on campus was touched by the fire."

The only real damage done on campus was to the baseball team's practice infield, the field groomer and several lanes of track in the stadium.

Almost before the fires were out, Class of 2013 alum, Jordan Ruidas, started a Facebook fund raiser for the victims. In addition, she held a community fund raising event and together, she raised a total of just over \$200,000.

The Foundation is proud to have been able to help Jordan with some of the financial logistics by becoming her fiscal sponsor.



(Left): Three lanes of track and a field groomer were destroyed by the fire.

The campus might have suffered the same fate had it not been for the heroic firefighters, many of them LHS alum, who stood their ground and kept the fire from spreading to any structures.



Firefighters getting ready to depart the Mango Line area of the campus. Photo Courtesy Matt Thayer and Maui News.



Mission Statement

E kako'o I ko Lahainaluna ma o na mea e ho'olako pono ai

SUPPORT the Lahainaluna school community by providing opportunities and resources

E kokua I ka malama 'ana a me ka ho'omau 'ana i ko Lahainaluna mo'aukala, kona mo'omeheu, a me kona mau loina

ASSIST in preserving and perpetuating Lahainaluna's unique history, culture and traditions

LAHAINALUNA HIGH SCHOOL FOUNDATION

2018 Legends of Lahainaluna

The *Legends of Lahainaluna* celebrated its sixth awards ceremony on November 30th at the Pioneer Inn. The Foundation honored former Student Activities Coordinator **Art “Uncle Fil” Fillazar** as the Individual Award recipient and **Dr. James Kumagai ('52)** for the Individual/Alumni Award. The **Maui Fire Department** received the Business award and **Jimmie Greig** was selected as the Posthumous Award recipient.



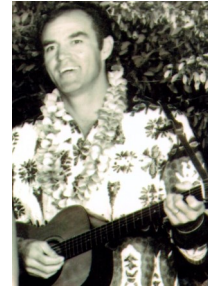
Art Fillazar



Dr. James S. Kumagai



Maui Fire Department



Jimmie Greig (posthumous)

LHS Class Challenge Celebrates 11th Year!!

The eleventh annual LHS Class Challenge took place on Friday, July 20 at the Hawaii Prince Country Club on Oahu. From its very beginnings, this has been a very important “fun” raising event for the Foundation but just as important, it connects LHS alumni and supporters for a fun day together.

This year’s format was a shamble where each player teed off, the best drive was selected and everyone played their own ball from there. The team score was the low two net scores on the hole added together. The field was divided into three flights for All Class (teams with all players who are LHS alumni), Some Class (at least one LHS alum) and No Class (open to anyone).



The event generated over \$9,400 for the Foundation, for a cumulative total of \$172,000!! The next Class Challenge has been scheduled for July 12, 2019. Mark your calendars and we’ll see you there. Entry/Sponsor/Player forms are available on our website, www.lahainalunahighschoolfoundation.org.

Aloha from the Grants Committee!

The Grants Committee and the Board of Directors evaluated grants throughout the year and awarded a total of \$23,300. Receiving grants this year were the Early College Program (\$5,800), D-Building water (\$1,000), Science Olympiad Team (\$700), Weightlifting (\$5,800), Robotics (\$5,000), Ag Department (\$5,000).

Donors: Your contributions towards programs and projects can be awarded through our Grants Committee, by your specifying such in the Temporary Restricted line of the donation reply form when you make your donations. **MAHALO** TO ALL for the fulfilling service to our school.



Susan Yap, Grants Committee Chair

2019 Sentry Tournament of Champions

The Sentry Tournament of Champions is truly an event in a class of its own. As the only PGA TOUR event to feature a winners-only field, it is one of the most past winners like Dustin Spieth, Patrick Reed and Tiger class golf that makes the Sentry a-kind tournament, it's also the Course at Kapalua and its



Courtesy GettyImages

Celebrating the event's close central focus of the tournament, tournament is offering a residents for the 2019 event. ment is celebrating Aloha play, and all fans are encouraged to wear their favorite Aloha attire to the course.

exclusive fields in all of golf, featuring Johnson, Justin Thomas, Jordan Woods. But it isn't just the world-Tournament of Champions a one-of-spectacular setting at The Plantation connection to the Maui community.

ties to the Maui community is a cent-and with that in mind, the Kama'aina rate to Hawaii Also, for the first time, the tournament is celebrating Aloha Friday during the second round of aged to wear their favorite Aloha

Most importantly, the Sentry Tournament of Champions is proud of the more than \$6.3 million it has generated for local Maui charities since 1999, including a longstanding relationship with the Lahaina High School Foundation.

Fans are reminded that public parking is located at the Lahaina Civic Center and complimentary shuttles will be provided from there to and from the course. There isn't a better family event on the island, as keiki 18 and under are admitted free of charge with a ticketed adult.

This year marks another exciting installment of the Sentry Tournament of Champions, both a celebration of the very best in professional golf, and of the vibrant community where it is played. There is truly no sporting event like the Sentry Tournament of Champions.

LHSF Board News



Lisa Francis, Kahana Branch Manager for the Bank of Hawaii, was added to the board at the March meeting. She filled the vacant Finance Committee Chairperson's position. She was elected to the Treasurer's position at this year's annual meeting.



Blaine Bernades, a board member since 2016, was elected Vice-President at the annual meeting



Craig Murakami, (left) Board Vice-President, joined the board in 2011, and stepped down in September. Treasurer Steven Raymond (right), who joined the board in 2012, also stepped down in September. Thanks to you both for your service.



Lahainaluna and the Kaua`ula winds

Lahainaluna High School is unique, iconic, and storied. Her essence can be summed in the chorus of her Alma Mater, a line crafted with purpose: "Ipu kukui 'a a mau pio `ole, I ka makani Kaua`ula." (The ever burning torch of learning cannot be extinguished by the fierce winds of Kaua`ula.) Albert Kaleikini, a Boarder, wrote the Alma Mater; Samuel Mo`okini musically arranged the famous alma mater.

The promise of those words were felt as Lahainaluna was well protected from the fierce Kaua`ula winds and fire that swirled around Lahainaluna as a result of Hurricane Lane. Those winds and fire came eerily close to Lahainaluna; they encircled our beloved school, burning the edges of the campus but not the structures, field, classrooms, and cottages. The first responders courageously fought back the flames.

So strong is the power of education at Lahainaluna, one that is embedded in her tapestry and founded on Hawaiian values, morals, culture, and wisdom. You can see and feel the power and spirituality in her campus `ohana, the community, and alumni.

Lahainaluna High School Foundation Scholarship Program In Its 16th Year

Mahalo to all donors and congratulations to all the scholarship recipients (Photo credit: Jon Shigaki)



Two, \$2,000 **Eugene Baybado Memorial—Class of 1964 Scholarships** were awarded. (L to R): Matilda Baybado, Kaylee Alconcel, Chanel Watson, Alexis Matias, Melissa Alconcel, Ralph Yanagawa.



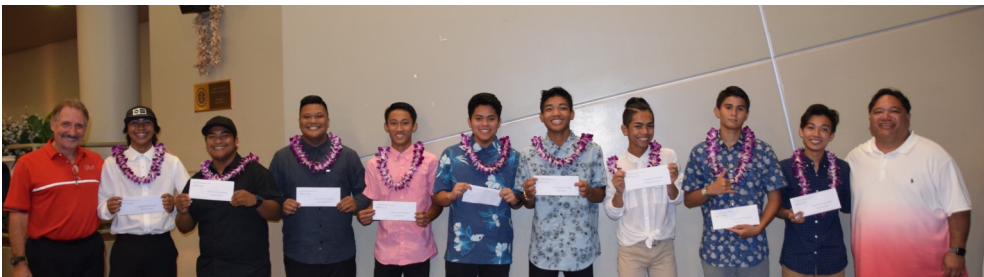
The \$500 **Kathy Berman Memorial Scholarship** was awarded to John Caguioa. Robbie Robbins presented.



The \$2000 **Class of 1968-50th Reunion Scholarship** was awarded to Krizhna Bayudan. Penny Wakida presented.



The \$1,000 **Andrew Kutsunai Scholarship** was awarded to Yasmine Chadli. Jeff Rogers presented.



There were (9) \$4,000 **UHMC/LHSF Joint Scholarships** awarded. (L to R) Mark Tillman, Zachary Salvador, Nathaniel Somera, Ezra Macadangdang, Jeric Lopez, Jerico Olpindo, Shane Ramos, Jarren Rosqueta, Ikua Tihada, John Supnet, Lui Hokoana (UHMC Chancellor).



The \$1,000 **Sammy Kadotani Service Award** was given to Maybel Galace (R). Leah Kadotani presented.



The \$1,000 **5A Rent-A-Space Scholarship** was awarded to Jacob Presley. Liz May presented.



The **Maureen S. Ariyoshi Memorial Scholarship** was awarded to Criselyn Cabading. Rob Shelton presented.



The \$1,000 **Luly Baker Scholarship** was awarded to Yasmine Chadli. Senator Roz Baker presented.



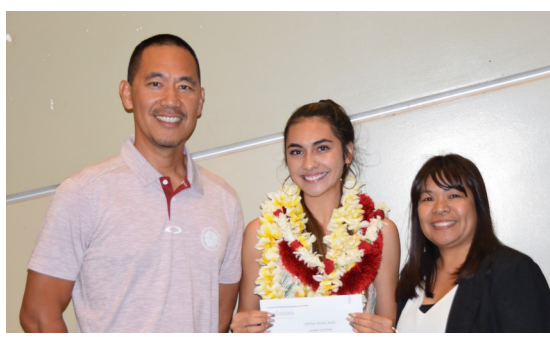
(L) The \$1,000 **Bank of Hawaii Scholarship** was awarded to Kylee Dean-Kobatake. Lisa Francis (L) and Ann Neizman (R) presented.

(R) The \$1,000 **Boss Frog's Dive & Surf Scholarship** was awarded to Mihana Ho. Betty Sakamoto presented.





The \$1,500 **Kiiko & Juan Cabanilla, Sr., Memorial Scholarship** was awarded to Ruby O'Donnell. Jeff Rogers presented.



The \$1,000 **Central Pacific Bank Scholarship** was awarded to Chanel Watson. Joel Navarro (L) & Rose Koyama (R) presented.



The \$500 **Mark & Judy Ellman Scholarship** was awarded to Rachel Balagso. Mark Tillman presented.



The \$500 **Fijal Memorial** and \$500 **Manning Scholarships** were awarded to Darren Diga. Rob Shelton presented.



The **Front Street Scholarship** was renewed for Max Becerra. Connie Sutherland presented.



The \$1,000 **Ebrahim Gabbay, MD, Memorial Scholarship** was awarded to Cley Palma. Suzanne Gabbay presented.



The \$2,000 **Kihachiro J. Hotta Memorial Scholarship** was awarded to M'Chelle Aguinaldo. Mark Tillman presented.



The \$500 **Ilocandia Filipino Store Scholarship** was awarded to John Caguioa. Susie Arcangel presented.



The \$1,000 **Mike Nakano Scholarship** was awarded to Leah Werblun. Noosh Nishimura presented.



The \$1,000 **Ka'anapali Land Mgmt. Scholarship** was awarded to Hannah Valencia. Kathleen Giambalvo presented.



The \$500 **Lahaina Fish Co. Scholarship** was awarded to Kiana Bell. Penny Wakida presented.



The \$500 **Lahaina Hawaiian Civic Club Scholarship** was awarded to Jaslyn Kanoeau. Toddy Lilikoi presented. Christina Nakihei was awarded a renewal. (not pictured)



The \$1,000 **Sgt Kusuda Memorial Scholarship** was awarded to Owen Pendergast. Betty Sakamoto presented.



The **Lahainaluna Boarder's Assoc. Scholarship** was awarded to Aliksa Pihda. Rob Shelton presented.



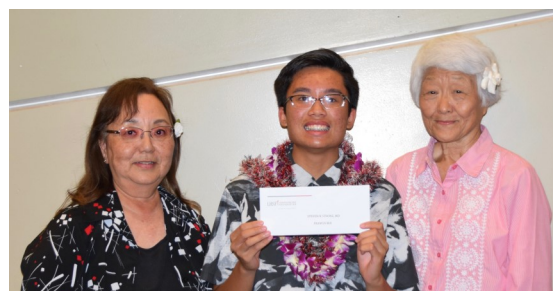
The \$500 **RVN Restaurant Scholarship** was awarded to Jasmine Cabanilla. Susie Saribay Arcangel presented.



The \$1,000 **Alfredo Sarian Memorial Scholarship** was presented to M'Chelle Aguinaldo. (L to R): Jaxon Navarro, M'Chelle, Joel Navarro.



The \$1,000 **Sentry Tournament of Champions Scholarship** was awarded to Nikki Zamani. Alex Urban presented.



The \$2,500 **Steven R. Strong, M.D. Memorial Scholarship** was awarded to Francis Bui. Jeanne Smythe (L) and Sohny Strong (R) presented.



The \$1,000 **H & K Takenaga Legacy Scholarship** was awarded to Seth Richards. Mark Tillman presented.



The \$1,000 **Territorial Savings Bank Scholarship** was awarded to Carter Stockham. Ryan Fukushima presented.

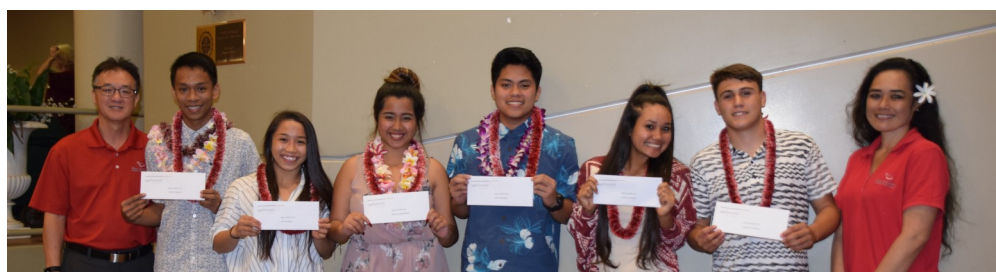


The \$500 **Valley Isle Community FCU Scholarship** was awarded to Aliksa Pihda. Penny Wakida presented.



The \$1,000 **Masters @ Ka'anapali Hillside-Blaze Kalilikane Memorial Scholarship** was presented to Elijah Ragudo. (L to R): Lois Ross, Roger Ross, Elijah, Keri Kalilikane, Blaze's mother.

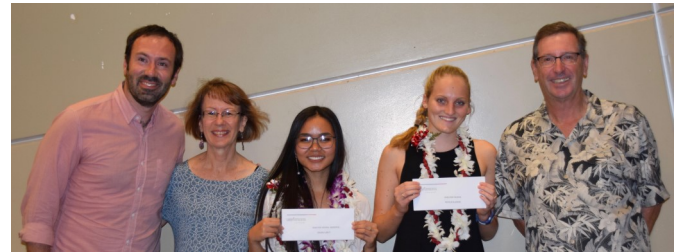
Six \$1,000 **Maui County Federal Credit Union Scholarships** were awarded. (L to R): Gary Fukuroku, Rowel Angasay, Ira Jean Navarro, Liliola Vehikite, Jerico Olpindo, Shirlene Companero, Kainalu Estrella, Emi-Lei Sodetani-Cabanilla.





← The \$1,500 renewable **Roy & Betty Sakamoto Scholarship** was presented to Lily Tran. (L to R): Roy Sakamoto ('60), Najeeb Bel (accepting renewal for Anis Bel), Lily Tran, Betty Sakamoto.

→ The \$1,000 renewable **Shelton 'ohana Scholarship** was awarded to Nicole Slusser. (L to R): Jeff Shelton, Louisa Shelton, Shania Abut (renewal), Nicole, Rob Shelton.



← Three (3) \$1,000 **Blackie Gadarian Vocational Scholarships** were awarded. (L to R): Gary Kepner, Sara Gadarian, La'akea Shim, Robert Arconado, Marcom Yagyagan, Gary Lincoln.



→ The \$10,000 renewable **Shigeru & Toyoko Ichiki Memorial Endowed**. (L to R): Gerald Ichiki, Ryan Agbayani, Lily Tran (accepting renewal for Cuong Tran), Shania Abut and Nemelda Yagyagan accepting renewals.



← The (4) \$1,000 **Lahainaluna High School Foundation Scholarships** were awarded to (L to R) Keiko Aotaki, Kaitlin Hodgins, Tori Tihada & Kyra Franz. Board president Mark Tillman presented.



→ The \$1,000 renewable **Na Hoaloha Eklou Scholarship** was awarded to Keiko Aotaki (center). (L to R): James Cacal, John Caguioa (Berman recipient), Keiko, Chase Rogers, Rosie Robbins.



← The \$5,000, renewable **Makana Aloha Foundation Scholarship** was awarded to Eva Olson. (L to R): JoRene Valkirs, Gunars Valkirs, Eva, Olson, Shania Abut (renewal), Jami Burks.



→ (4) \$1,000 **TS Restaurant Scholarships-Kimo's, Leilani's, Hula Grill, and Duke's** were awarded (L to R) Nick Ware, Jason Donez, Sheilaika Agbayani, Kenneth Ines, Jaret Naho'oikaika, Jack Starr, Kylee Dean-Kobatake, Leah Kadotani, Ruby O'Donnell.



MAHALO TO OUR DONORS

Gifts received from:

November 1, 2017—October 31st, 2018 (cumulative)



Hoku o ka Pakipika 1,000,000 & above

In Perpetuity

Sue D. Cooley

Luna Ali'i \$500,000-\$999,000

Sentry Tournament of Champions

David Malo \$100,00 to \$499,000

Shoma Hotta

Shigeru & Toyoko Ichiki Scholarship

LHS Class Challenge

The Makana Aloha Foundation

Pu'u Pa'a Pa'u \$1,000 to \$49,000

AAAAA Rent-a Space

Clarence M. Agena ('62)

Susan Antoku ('60)

Mutsuo Aoyama ('56)

Tanya Arakawa ('68)

Araki Family, LLC

Charles Araki ('52)

Henry Ariyoshi

Bank of Hawaii

Matilda Baybado

Boss Frog's Dive & Surf

Evelyn & Angelito Cabanilla

Madeline Callahan

Central Pacific Bank

Charity Walk

Ned Clapp, Clapp Family Foundation

Class of 1964

Class of 1968

Class of 1973

Nancy Cross

Duke's Beach House

Mark & Judy Ellman

Suzanne Gabbay

Sara Gadarian

Del Green ('77)

Pu'u Pa'u Pa'u (cont.)

Wayne Hirata ('67)

Harold Hirokane ('54)

Hula Grill

Gerald Ichiki ('62)

Vernon Ichimura

Ryan Imoto ('68)

Dr. James Isobe ('60)

Ka'anapali Land Management

Brian Kelly

Anthony Kikuyama ('53)

Kimo's Restaurant

Andrew & Mildred Kutsunai

Lahaina Fish Co.

Lahaina Hawaiian Civic Club

Lahainaluna Boarders' Assn.

Leilani's

Deborah Loeffler

Betty Lum ('55)

Eleanor Martin

Keith Masuda

Maui County FCU

Melaleuca

Ann Mikami ('56)

Priscilla Mikell ('67)

Jyun & Mary Mishima ('70)

Stan & Jean Miyahira ('56)

Lyle Miyasaki ('80)

Na Hoaloha Ekolu

Michael Nakano

Antoinette Polancy

Prepose Engineering Systems, Inc.

James & Martha Robinson

RVN Deli Kitchen

Roy ('60) & Betty Sakamoto

Seattle Foundation

Rob & Louisa ('73) Shelton

Harriet Shima ('50)

Robert Shishido ('68)

Stephanie Shoemaker

Sohny Strong

MAHALO TO OUR DONORS

Pu'u Pa'a Pa'u \$1,000 to \$49,000 (cont.)

Gene Takenaga
Territorial Savings Bank
Valley Isle Community FCU
Susan Wilson ('64)

Torchbearers \$500—\$999

Albert Ahia ('68)
Hanson Bridgett
Class of 1948
Joey Dyckman
Diane Nagasako Finn ('68)
Martha Fukunaga ('59)
Mike ('54) & Claire ('56) Furukawa
Richard Hirata ('53)
Gordon & Sharon Ito ('63)
Martha John
Kaylen Kadotani ('04)
Joseph Kahananui, Jr. ('68)
Charlene Len ('68)
Leoda's Kitchen & Pie Shop
Dale Mau ('68)
Midtown Productions
Ramsay Morisaki ('68)
George & Alma Nagao ('51)
Wayne ('63) & Kate Nishijima
Ramsay Morisaki ('68)
Jami Power
Gary Robert
Lee Ann Shigezawa ('73)
William Smythe ('68)
Thelma Tengan ('48)
Setsuo Ushio ('52)
Yvonne Von Amelunxen
Nord Yamauchi ('68)
Susan Yap

I mua \$100—\$499

Bobby ('64) & Diana Abilay
Wayne Anbe ('68)
Marion Antoku ('55)
Hisashi Araki ('49)
Hanson Bridgett
Frances Berg-Zamen

I mua \$100—\$499 (cont)

Nadyn Cano
Kimo Clark ('98)
Cecilia Corley
AJ & Butch Cregan
Anthea-Jeanne Cribbs
Byron Crossen
Diane Delos Reyes
Joanne Dennis
Diane Erickson ('68)
Lisa Fujiyama ('76)
Donald & Arleen Gerbig
Lori Gomez-Karinen
Ronald Hayashi ('59)
Sharon Honda ('71)
Hui Hoaloha
Primrose Judge ('68)
Ryssa Kaina
Mark King ('68)
Sue King ('62)
Sandra Klask ('68)
Irene Kubo ('58)
Lahaina Tax and Accounting Services
Charlene Len ('68)
Fely Martinez ('68)
Mark & Nancy Maska
Wayne & Aurora Matsuda ('82)
Norman Morinaga ('59)
Stanley Nakamoto ('68)
Harold Nihei ('58)
James Nishimoto ('68)
Steven Okada ('91)
Barbie Otomo
Kathleen Phillips
Stephen Pisacano
Paul & Una Ratterman
Stephen Raymond
Manuel Remocaldo ('68)
Theresa Shim ('68)
Mark Simms
Irene & Dr. Byron Smith
Masako Suehiro ('51)
Tsugio Suzuki ('51)
Evelyn Toba ('55)
Kenneth Yonamine ('63)

MAHALO TO OUR DONORS, cont

Pride & Spirit \$1—\$99

Jacob Ah Sing
Maxine Carlson ('68)
Ilima Greig-Hong ('80)
Joel Navarro
Kapua Steward ('98)
Joyce & David Taylor

In-Kind

Lahaina News
Dennis & Erin Meinyer
Lou Salera

Legacy Giving

The following either directed donations after their passing, or have indicated that they will give through their wills or trusts.

Kenneth Nohealani Sharpe
(6.30.34-11.16.13)
Harold P.K. Wong ('43)
Gloria Gorter ('67)

Lahaina Strong

The LHS Foundation served as the fiscal sponsor for the Lahaina Strong Fundraiser under the direction of Jordan Ruidas ('13). Many people made donations to Lahaina Strong, making their checks out to the Foundation but their names aren't mentioned in our donor list as gift wasn't to the Foundation. Also, there were hundreds of people that gave through Facebook and those names were not revealed to us.

The selflessness and work ethic that Jordan revealed during this time is a testament to the Lahainaluna community and the spirit that dwells here.

The Foundation believes that helping Jordan helped us fulfill our mission to support the Lahainaluna community by providing opportunities and resources.

Class Challenge

LUNA PRIDE AND HOLE SPONSORS

A-Team Solutions (Glenn Kodani '70)
CMR Financial Advisors, Inc.
(Clifford Robello)
Creature Comfort (Dan Shimabuku '72)
HC&D (Aaron Uno '66)
Henry Loui's Restaurant
(Anson Kaneshiro '75)
Class of 1965 Boarder's Team
Miyabara Associates, LLC
(Mike Miyabara '68)
Pural Water Specialty Co., Inc.
(Earl Ichimura '74)

TOURNAMENT AND HOLE SPONSORS

Island Top Soil (David Souza Jr.)
Morisaki Family (Ramsay Morisaki '68)
Pyramid Insurance
R.M. Towill Corporation (Collins Lam)

ADDITIONAL HOLE SPONSORS

In Memory of Clarence and Pat Agena
Blaine Bernades-Pyramid Insurance
CMR Financial Advisors, Inc.
(Clifford Robello)
Island Sotheby's International Realty

HOLE IN ONE SPONSOR

Tony Nissan
(S.Masamitsu, K. Nakamoto, S.Eguchi)

Players

Mahalo to all of the players who participated in this event. Due to space considerations, we are unable to print each of the individual names.

*If you made a donation to LHSF between Nov. 1, 2017 and Oct. 31, 2018, and your name isn't listed, please contact the Executive Director at the phone/email listed on the back. Our apologies if we missed you.



US POSTAGE PAID
NON PROFIT
MAILED FROM
ZIPCODE 96761

PERPETUATING THE TORCH OF EXCELLENCE

P.O. Box 11617

Lahaina, HI 96761

Phone: 808-661-5332

E-mail: LHSFoundation@hawaiiantel.net

www.lahainalunahighschoolfoundation.org

Return Address Requested

Board of Directors

Mark Tillman-President

Blaine Bernades-Vice President

Lisa Francis—Treasurer

Myrna Ah Hee—Secretary

Joel Navarro

Betty Sakamoto

Rob Shelton

Susan Yap

Staff:

Jeff Rogers—Executive Director

Bill Violette—Bookkeeper

Like us on:



Follow us on:



You Can Help Perpetuate the Torch of Excellence...

The Lahainaluna High School Foundation is a non profit, 501-c-3 organization, founded by a group of community members and alumni whose mission is to support the Lahainaluna school community by providing opportunities and resources and to preserve and perpetuate Lahainaluna's unique culture, history and traditions.

There are **MANY WAYS** that you can help and continue **to MAKE A DIFFERENCE**. In-kind contributions & volunteering help make a positive impact, as do monetary donations which can be directed to the areas of your choice, or wherever the need is greatest. Unrestricted donations are applied to our Charity Walk efforts for a greater yield.



You can donate to the Foundation when you shop at Amazon!! Amazon will donate part of your purchase (.5%) to the Foundation. Simply sign up for **AmazonSmile** and designate the Foundation as your charity.

We will continue to offer **Brick Pavers** and **Bleacher Sponsorships** as a way to support the Sue D. Cooley stadium at Lahainaluna.

The **Scholarship awards** continue to grow and aid students seeking to further their higher education and vocational training.

And remember, since 2002, the LHS Foundation has awarded more than \$1,250,000 towards **Grants and Sponsorships**.

Consider making a gift, no matter how much or how little. Contact the LHS Foundation for more info. All contributions are appreciated! I MUA, Lahainaluna! MAHALO!