



NEWSLETTER OF THE LAHAINALUNA HIGH SCHOOL FOUNDATION KA LEO O KE KAHUA O LAHAINALUNA

WWW.LAHAINALUNAHIGHSCHOOLFOUNDATION.ORG

Lahainaluna High School Foundation

Board of Directors

Mark Tillman—President
Craig Murakami—Vice President
Nancy Cross—Secretary
Steven Raymond—Treasurer
Walter Vierra—Finance Chair
Susan Yap—History and Cultural
Preservation Chair & Grants Chair
Richard "Noosh" Nishihara -
Scholarship Committee Chair
Myrna Ah Hee
Lester Nakamoto
Betty Sakamoto
Rob Shelton
Lanny Tihada

Staff:

Jeff Rogers—Executive Director/
Development Coordinator
Dawn Fujiwara—Bookkeeper



On behalf of the Board of Directors of the Lahainaluna High School Foundation, we wish you and your families a joyous holiday season and a healthful and prosperous New Year. Thank you for your continued support of Lahainaluna. Our programs and sponsorships have touched every department and club at Lahainaluna, and we are ever grateful for your contributions that serve to promote success at Lahainaluna.



The campus is buzzing with excitement about a football team that has been ranked the number one Division II School in the state. Congratulations to a great team led by coaches Garrett Tihada and Bobby Watson. Next season we will be debuting our new stadium with 3,000 seats, press box and arrival building. As a reminder, it's still not too late to honor your family with a brick paver. They make great Christmas gifts. Please see our web site for further details. We also congratulate our Cross-Country team for their first MIL title since 1990.

We started 2013 with the Hyundai Tournament of Champions at The Plantation Course at Kapalua. We are very honored to be noted as a beneficiary of this prestigious PGA Tour event. Weather conditions were challenging this year but our team pulled together and contributed enormously to the eventual success of the tournament. Play pushed into Tuesday that contributed to lots of starts and re-starts.

We saw continued growth in The Friends of the Lahainaluna High School Library, and our scholarship program. We now have 148 endowed books each year. LHSF also awarded a record \$135,000 to 47 students and two teachers during May's scholarship banquet. Even though Andy Kutsunai has resigned as Scholarship Chairman, his presence is still felt and we are grateful for the groundwork he has laid for this important program. There are many community organizations, businesses and individuals who continue to support the scholarship efforts, and they have made a big difference for many people.

In August, the LHS Class challenge was held at Waikele Country Club. Many mahalo to Earl Ichimura, Eric Okazki and Mike Miyamoto for carrying the torch and keeping this "fun-raiser" event going.

November is an important month as we are seeing continued progress on the second phase of the stadium project. Mark Tillman and Jeff Rogers continue to move this stadium forward despite many obstacles and challenges along the way. The end result is going to be an incredible addition to the campus.

Also in November, we hosted the third annual Legends of Lahainaluna event at Pioneer Inn. This year's honorees included Reverend Earl Kukahiko, corporate legend Hellas Construction, and a posthumous award to Mary Bloder. This event is always a highlight to our year and giving thanks to some incredible people and organizations is always a delight.

We have many challenges in the New Year, which will include efforts to keep our Boarding program viable, and in place for the long term. There are needs at every level of the school, and as an organization, we promise to remain committed in our efforts to deliver programs and services that will continue to enhance and promote the educational opportunities at Lahainaluna.

Imua Lunas and Mahalo for your support!
Rob Shelton

Mission Statement

E kako'o I ko Lahainaluna ma o na mea e ho'olako pono ai
SUPPORT the Lahainaluna school community by providing opportunities and resources
E kokua I ka malama 'ana a me ka ho'omau 'ana i ko Lahainaluna mo'aukala, kona mo'omeheu, a me kona mau lina
ASSIST in preserving and perpetuating Lahainaluna's unique history, culture and traditions

LAHAINALUNA HIGH SCHOOL FOUNDATION



Executive Director's Message

As the person who processes all of the correspondence that comes into the Foundation, I wanted to personally thank all of you who responded to our April newsletter with your generous donations. I want to let you know that this issue puts us back on our normal end-of-the-year schedule, so please don't think that we are only coming to you again with our hand out. Your donations are being acknowledged, not only in this issue, but have already been posted on our website.

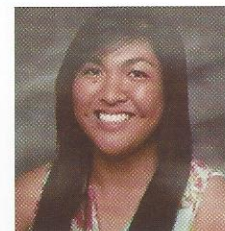
We are happy to be able to provide the printed newsletter; however, I encourage you to subscribe to our electronic newsletter, so that you can stay informed on a regular basis as to what is going on at Lahainaluna, and at the Foundation. To subscribe, please fill out the contact form which is accessed through the "Contact" tab on the website. In the "Comment" box, please enter "subscribe".

By the time you receive this, we will have already celebrated our 2013 "Legends" of Lahainaluna. The awards ceremony took place on November 21, at the Pioneer Inn. The list of winners and pictures of the event should already be posted on the website.

Meet two of our 2013-2014 Student Advisory Committee members



Kirsten Gilchrist is a senior and is active in the Health Pathway, Student Government, National Honor Society, various clubs and sports. She hopes to be able to share the thoughts and opinions of her fellow classmates to the Foundation.



Ennah Cabading is a junior at Lahainaluna, and says that she is honored to serve as a student representative to the Lahainaluna High School Foundation. She wants fellow class members and students to be updated with the latest activities.

Lahainaluna Boarders Association

Every school year the Boarding Department faces challenges, and this year is no different. However, more than ever we feel that this situation will affect the recruitment of future boarders and discourage current boarders and parents from remaining with the program. We are asking for support from our legislators, community leaders, alumni, past and present boarders and their parents or family members as well as the community to help resolve this situation.

This year the Hawaii state legislature authorized 6 positions at Lahainaluna specifically for the boarding department so that dormitory teacher positions could be converted to dormitory attendant positions. The school finds itself one position one shift short. As a result, each boarding student is required to check out every Sunday by 8:00am and remain off campus until 4:30pm. I was a boarder from 1966 thru 1971. Sundays were often spent sleeping in (boarders report for work Mon-Sat at 6:00am) catching up on homework, doing laundry, working off overtime or simply relaxing with their boarder ohana.

It is nearly impossible and also unwise to subject the boarding students and their parents or sponsors to such a schedule. Many of the students come from the outer islands or from outlying areas like Hana or Upcountry Maui. Parents and sponsors of students from off island cannot be expected to assume such a responsibility on a regular basis. There is a link to some prepared letters to our legislators for you to download and send in although a personalized letter would be more appropriate. Their contact info is also provided. We appreciate any comments, suggestions or concerns.

Mahalo for your support.

Craig Murakami, President

Lahainaluna Boarders Association

Ph: 808-870-5217

Email: cmurakami@live.com



LAHAINALUNA HIGH SCHOOL FOUNDATION



Hyundai Tournament of Champions

The Lahainaluna High School Foundation has once again been selected as a "Designated Beneficiary" for the 2014 Hyundai Tournament of Champions scheduled for January 2—6 at The Plantation Course, Kapalua Resort

This prestigious winners-only event has raised over \$4.4 million for the Maui community since 1999. The 2013 tournament was successful for players, fans, and the non-profit beneficiaries of the tournament. Funds are distributed to various clubs, teams, and programs at Lahainaluna who assist with making the tournament a success.



Path of Champions Paver Recognition Program The Pride & Spirit Paver is now only \$100!!

Our construction delay has allowed us to move the deadline for decorative brick pavers until December 31, so there is still time for you to be a part of this incredible facility through our brick paver program.



To commemorate the Phase 2 build-out, we are offering the Pride & Spirit Paver (4"x8") for only \$100! The Torchbearer's & Patron Paver will remain \$500 & \$1,000, respectively, however, the Patron Paver Plus will be \$1,500. (see details on our website for more information)



Be a part of this incredible facility, through our brick paver program. A great gift to honor Lahainaluna graduates—past, present and future! "Path of Champions"

Legends of Lahainaluna



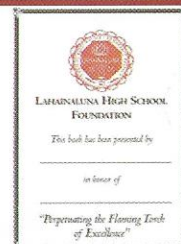
The 3rd Annual Legends of Lahainaluna Awards was held at the Pioneer Inn. It was another memorable event for Lahainaluna alumni and supporters. An enthusiastic crowd enjoyed appetizers and desserts, buffet dinner, entertainment, and of course, the awards ceremony.

This year's honorees included Hellas Construction in the Business/Organization category, Mary Josephine Bloder, former LHS teacher, was honored posthumously, and Earl Kukahiko was the Individual Award winner.

Friends of Lahainaluna Library

The Friends of The Lahainaluna High School Library is a unique Endowment Fund. For a one time donation of \$500.00 a book is purchased and placed in the Lahainaluna Library every year in perpetuity. This is wonderful way to honor or memorialize those who have made a difference in our lives.

Placed in front of each book is a bookplate commemorating the donor and the person in whose honor the book is given.



HOW YOU CAN HELP

The only fund raiser that the Foundation holds on its own behalf is the annual online auction. You can help sustain our mission by assisting us with acquiring auction items. If you have any connections, or suggestions with hotels, restaurants, activities, etc., please contact the Foundation office.

Lahainaluna High School Foundation Scholarship Program In Its 12th Year

Lahainaluna High School hosted the 2013 Scholarship Awards Program on May 8 in the new cafeteria, Hale Pa'ina. Lahainaluna High School Foundation participated by awarding the following scholarships: (Photos courtesy Jon Shigaki)



Making their debut this year was The Masters at Kaanapali Hillside - **Blaze Kalilikane Memorial Scholarship**. Blaze was a LHS grad, and employee of The Masters who was killed in an auto accident on December 19, 2012. Lois & Roger Ross presented the 1st year scholarship to **Jade Chihara**. Also pictured is Blaze's sister, Brittany.

The second scholarship in its debut year was the **Krause Chiropractic Scholarship**, which was awarded to **Hope Morikawa**. Hope was unable to attend. Dr. Krause presented.



The third debut scholarship was the **Sgt. James S. Kusuda Memorial Scholarship** which was awarded to **Robert Griffith**. Sgt. Kusuda was a police officer for 33 years. He was a boarder at Lahainaluna since the 6th grade when the school was known as Lahainaluna Seminary. He graduated in 1926. Presenting the award was Sgt. Kusuda's daughter and donor, May Fujiwara.



The **Hotta Memorial Scholarship** was awarded to **Gaylord Garcia**. Presenting the award was Kazuichi Hamasaki.



The **Front Street Scholarship** was back for its second year and was awarded to **Chelsey Erickson-Vierra**. The Front Street Scholarship provides a renewable scholarship of up to \$35,000 a year. Pictured (L to R), presenter Leslie Hiraga, Chelsey Erickson-Vierra, Louise Abihai, Lana Vierra and Alvin Vierra. Last year's recipient, Jeremy Briones de Gracia, received a renewal for his scholarship.



The **Boss Frog's Dive and Surf Scholarship** was awarded to **Ezra Baccar**. Presenting the award was Jeff Rogers.



The **Class of 1956 Scholarship** was presented to **Reilly Pasion**. LHSF Board President Mark Tillman presented.



The **Fred Izumi Legacy Scholarship** was awarded to **Bailey Pendergast**. LHSF Board member Rob Shelton presented.



The **Central Pacific Bank Scholarship** was awarded to **Jeannie Ramelb**. Presenting the award was Lahaina Branch Manager, Issac Parilla.



The **H&K Takenaga Legacy Scholarship** was awarded to **Marella Galace**. Presenting the award was LHSF Board member, Betty Sakamoto



The **Lilly Nagaoka Takenaga Scholarship** was awarded to **Leslie Garo (L)**. The **Illocandia Scholarship** was awarded to **Abigail Haduca (R)**. LHSF Board member and Boarding Dept. staff, Susan Yap presented.



The **Maureen S. Ariyoshi Memorial Scholarship** was awarded to **Andrew-Ray Espiritu**. Reed Ariyoshi presented.



The **S & T Ichiki Scholarship** was awarded to **Junna Gazman** (3rd from left). The S&T Ichiki Scholarship is a renewable scholarship. Also pictured is the mother (L) of **An & Jing Hua**, who were both renewed, as well as **Cheyenne Baltonado** (2nd). Gerald Ichiki presented.

Leilani's Restaurant on the Beach was pleased to award a scholarship to **Ryan Ragudo** (2nd from left). Presenting was Jason Donez. **Kimo's Restaurant Scholarship** was presented to **Aja Toscano** (4th) by Chris Almeroth. **Duke's Restaurant Scholarship** was awarded to **Julian Bel-Robert** (5th). Presenting the Duke's award was Sean Helliard. **Hula Grill Restaurant** presented a **T.S. Restaurant Scholarship** to **Bridget Joy**. Presenting was Wil Noye (R). (Bridget was unavailable)



Lahainaluna High School Foundation Scholarship Program In Its 12th Year



The **Ka Ipukukui Scholarship** was awarded to **Rhys Lendio**. The scholarship is made available from funds donated by former Lahainaluna High School Principal Mike Nakano. Board member Lester Nakamoto presented..

The **Roy and Betty Sakamoto Scholarship** was awarded to **Makenna Stockham**.

LHS Alum Roy Sakamoto (R) and LHSF Board member Betty Sakamoto (L) presented. The Sakamotos announced scholarship renewals for **Leilani Miranda** and **Lewilyn Gutierrez**, Lahainaluna High School graduates who were previous recipients of the Roy and Betty Sakamoto Scholarship.



The **RVN Restaurant Scholarship** was awarded to **Kanoelani Delatori**. LHSF Board member Lester Nakamoto presented.

The Lahainaluna High School Foundation was pleased to award its **AOHT Scholarship** to **Leslie Mina**. The LHSF also presented scholarship awards to the following: **Paige Cajudoy**, **Jessica Wallace**, & **Vincent Magno**. Jeff Rogers presented.



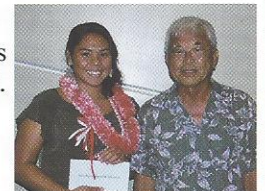
The Lahainaluna Boarder's Association was pleased to present the **Boarder's Association Scholarship** to **Jessica Wallace**. LHSF Board Vice-President and LHS Boarder's Association President Craig Murakami presented.

The **Territorial Savings Bank Scholarship** was awarded to **Kayshya Saribay**. Ryan Fukushima presented.



The **Valley Isle Federal Credit Union Scholarship** was awarded to **Mark Alamon**. LHS alum and LHSF Board member Noosh Nishihara presented.

The **West Maui Veterans Club Scholarship** was awarded to **Lakeisha Ching**. Thomas Kunishige presented.



The **Steven Strong, MD. Memorial Scholarship** was awarded to **Jenina Pascua**. LHSF Vice-president Craig Murakami presented.

The **West Maui Federal Credit Union** awarded 5 scholarships to the following students: **Esther Arvizu**, **Makana Kaaikala-Caban**, **Ivy Tejada**, **Vincent Sarian** and **Amanda Matsuda**. Thomas Kunishige (L) and Arthur Tabano (R) presented.



The **Makana Aloha Foundation Scholarship** was awarded to **Haley Robb** and presented by Gunars & JoRene Valkirs. Receiving scholarship renewals were **Joshua Gastra** and **Emma Baccar**.

The **Alredo Fred Sarian Memorial Scholarship** was awarded to **Kekukuulani Haake**. Kekukuulani was unable to attend. Rob Shelton presented.

Donors October 2012—October 2013
Mahalo and Imua Lahainaluna!

Our Thanks to All Our Donors

We would like to acknowledge everyone's generous contribution. We apologize for any errors or omissions of anyone who has taken the time to support our organization, and Lahainaluna, through your gifts. Without your generosity, we would cease to exist, along with programs like Friends of the Library, the grants we administer to clubs, athletic teams, and student groups, our scholarship program, and improvement projects like the stadium. We can't fully express in words how much your support means, but we offer you our **heartfelt mahalo**.

Pu`u Pa`u Pa`u Level (\$1,000 & up)

Sue Cooley
 Hyundai Tournament of Champions
 Salesforce.com
 LHS Class Challenge
 The Makana Aloha Foundation
 West Maui Community FCU
 Harold Hirokane
 Roy & Betty Sakamoto
 Mrs. Steven Strong
 Nancy Young
 Frederick Izumi
 Henry Ariyoshi
 H & K Takenaga Advised Fund
 Rob & Louisa Shelton
 Georgette Uyeda Hill
 Central Pacific Bank
 Wallace & Gladys Mae Fujii
 Lahainaluna Boarders Association
 The Masters at Kaanapali Hillside
 May Fujiwara
 West Maui Veterens
 Kimo's Restaurant
 Leilani's Restaurant
 The Mark & Debi Roling Charitable

*In honor of Hannelore Berlin Roling
 (Class of 2013).*

Keith Masuda

In honor of Jerry Y. Iwamoto

Pete & Tammy Roling

*In honor of Hannelore Roling
 (Class of 2013).*

Territorial Savings Bank
 Michael Nakano
 Frogman Charters

Torchbearer's Level (\$500 & \$999)

Dr. Brendan Krause
 Hawaiian Rainforest LLC
 Ilocandia Filipino Store
 Moses Aola
 Charles Barnum
 Bob & Tess Cartwright
 Charles & Preston Fox III
 Frederick Y. Fukunaga
 Denis Irimata
 Ronald & Janice Kondo
 Randall J. Lee Pau
 Stanley & Maureen Naganuma
 Edwin T. Okubo
 Dane Sakaida
 Judy Guerrero
 Ted Takai Jr.

*In memory of
 Sarah Kanoelani Makekau Takai*

Paul Tate
 Juanita Teraguchi
 Leola Vierra
 Valley Isle Community F.C.U.
 Local Union 1186 IBEW
 Lyle Miyasaki
 Edwin Okubo
 Lyle Miyasaki

Imua Level (\$100 to \$499)

Gary & Diane Masuda
 Brian Kelly
 Andrew Kutsunai
 Wayne & Kate Nishijima
 Kenneth Akasaka

Imua Level (\$100 to \$499) continued

Denise DeVor
 Matthew Nagasako
 Hannah Paa
 Sly Mongoose, Inc
 Lester Yamaguchi
 Martha John
 Theresa M. Pacheco
 Robert & Joey Dyckman
 Richard Hirata

In memory of Tetsuyuki Hirata ('44)

Ralph M. Murakami
 Linda Akiyama
 Susan Antoku
 Tanya Arakawa
 Roshelle Bailey
 Benny Cariaga
 George T.S. Chong
 Andrew Davis
 Ernest Encarnacion
 Keoki Freeland
 Carolyn & Thomas Fujita
 Kazuyo Furusho
 Shiro Furusho
 James Haruguchi
 Laura & Douglas Hayashi
 Hawaii Maui Wedding Association
 Hula Grill Restaurant

Vernon Ichimura
 Paulette Ichimura
 Roger Imamura
 Donald Ishikawa

In memory of Ishikawa Service Station

Gordon & Sharon Ito
 John Kawaiaea
 Fred Kaya

Imua Level (\$100 to \$499) continued

Anthony Kikuyama
William Kinaka, J.D.
Sue (Yoshitake) King
Marion Klauz
Richard Kosaka
Kazukiyo Kuboyama
Bonnie Leasure
Harold & Irene Lusano
Gary & Diane Masuda
Kenneth Matsumoto
Bob & Kitsy Meniffee
Clare Merrill
In memory of Mildred Bowen

Ann N. Mikami
Mel Munemitsu
Melvin Nakaima
Linda Oba
Mrs. Jean Okimoto
Mr. & Mrs. Richard Osato
Jerry Recamara
Preston Akiyama
Mark Babayan
Remely Bilog
Nelson Hiraga
James Hirata
Janice Hussey
Henry Kajihara
Robert Motooka
Rosalind Nakama

In memory of Hiroshi Nakama

Janice Pearson
Frances Sato
Richard N. Siangco
David Takahashi
Warren Taguchi
Dianne Takeuchi
Thelma Tengan
James Tobita
Janice K. Tokuno
Betty Tsugawa
Karen Watanabe
In memory of Yamamoto Store
Letty Yamada
Gary & Alma Yoshimori

Amy McKay
Paulette Nakamura
Susan Antoku
Roz Baker
Stanley & Dorothea Engeldorf
Vernon Ichimura
Gordon & Sharon Ito
Ron Kawahara
Barney & Louise Lagbas, Jr.
Kathleen & Mark Miyakawa
A Tropical Enhancement Landscape,

Ashford Delima
Ron Kawahara
Barney & Louise Lagbas, Jr.
Thomas & Rona Landrigan
Kathleen & Mark Miyakawa

Pride and Spirit Level

Blaine Bernades
Suzanne Gabbay
Paul & Victoria Anbe
Hisashi Araki
Selma Chung
Drs. James & Sharon Gardepe
Carl Kaiama
Jan Kakiuchi
Virginia Keen
Harry H. Kikuyama
Karen & Thomas Kondo
Janet Lendio
Sadako Nakai

In memory of Fumio Nakai

Wally & Darlene Rogers
Victor & Carlene Belonis
Wayne & Teresa Ching
Carlene Flores
Shirley Grossi
John & Dawn Kane
Roback Kawaiaea
Iris & Elizabeth Lee Pau
Gregory & Lorelle Peros
James Plunkett

Pride and Spirit Level continued

Steve & Lorilei Salbedo
Wayna & Ann Saruwatari
Dora Sato
*In memory of Donald Y. Sato,
Class of 1955*

Alvin Shima
Lloyd & Tanya Shima
Aileen Shimokochi
Steven & Debra Sturdevant
Doug & Candace Sugidono
Carol Todoroki

Helen Troy Von Tempsky
In memory of Ethelva Troy

Robert Yokoyama
Ruth Yoshida
Edwin Yoshitake
Michael & Claire Furukawa
Alan Hayashi
Michael & Claire Furukawa
Alan Hayashi
Randall Joyo
Ross Iwamoto
Ross Iwamoto
Nobue Ching
Mike Gallagher
Lynn Nakamura
Gary Robert, Attorney At Law
Mildred Roy
Juanita Ampong

Mae Shimabuku
In memory of Harold Shimabuku

Harold K. Shimomura
Darrell & Lynn Steberg
Wayne Wong
Bob Curry
Faith Corrales
Norman Morinaga
Kimiko Shimabukuro
Charmaine Tavares
Romy Ugalino
Rene Yamafuji
Margo & Damon Gill