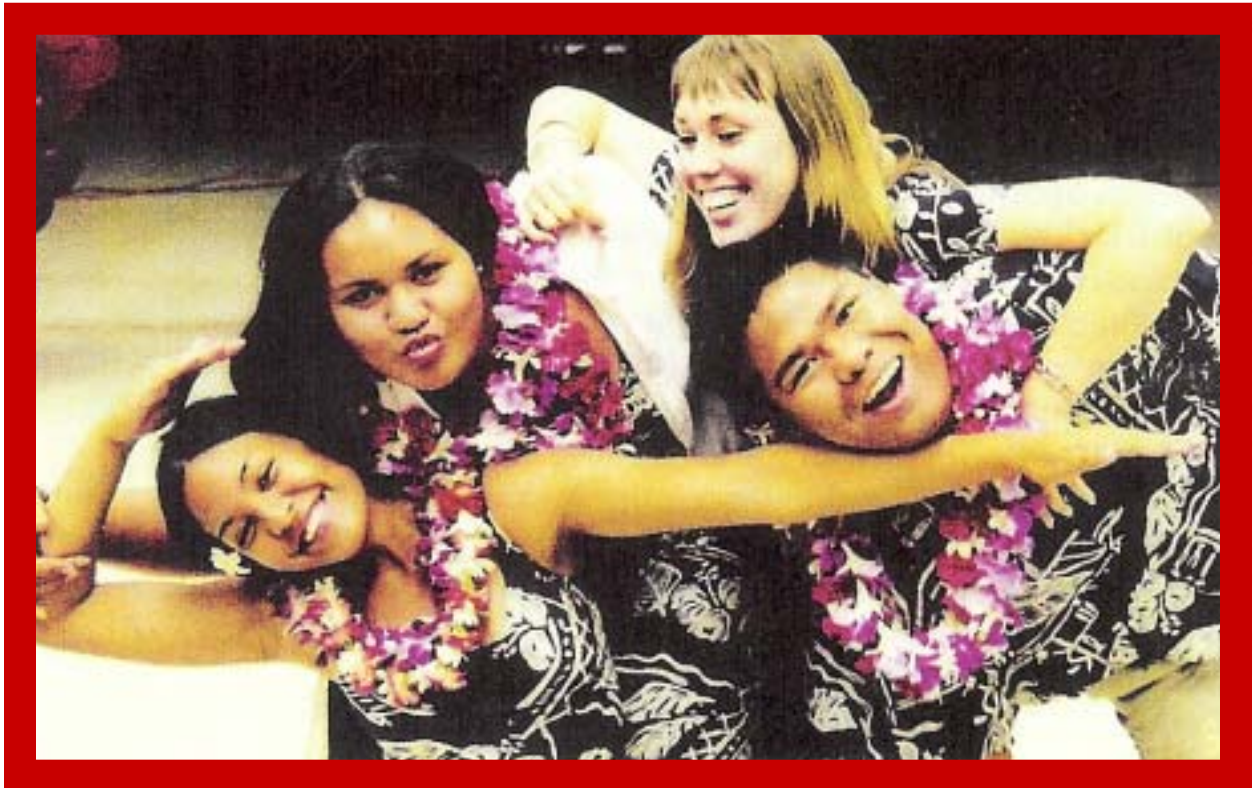


I 'ike po'okela na 'opio a pau o Lahainaluna

*A superior high school experience
for all Lahainaluna students*



Lahainaluna High School Foundation
Strategic Plan

October 2008

"Lahainaluna"

Alma Mater

Words and music by Albert Kaleikini

Arranged by Samuel Mookini

**'O ka Malu 'ulu o lele (No e ka 'oi)
Na kualono nani e (Ku kilakila)
Me ka ua Kilikilihune (A o Halona)
Ho'opulu i ke oho o ka palai.**

*Oh the land of the shadow of the flying breadfruit
The wonder of lands
With the ever spraying delightful showers (of Halona)
Wetting the foliage of the ferns.*

Hui:

**'O Lahaina, Lahainaluna nani
Ka hoku hele ho'i o ka Pakipika
Ipu Kukui 'a a mau (Pio 'ole)
Pio 'ole i ka makani Kaua'ula.**

Chorus:

*Oh Lahaina, Lahainaluna nani (beauty)
The leading star of the Pacific
The ever burning torch which cannot be
Extinguished by the fierce winds of Kauaula.*

**Hu'i anu ka wai mauka (Wai piula)
Ke'oe nenehe i ke aumoe ('Olu e)
'Au'au na manu o ka uka ('Oka uka weli)
Ho'olono i ka leo pele kani.**

*With the cool waters from the mountains (the springing waters)
Dripping silently during the midnight (so comforting)
The birds happily breathing in its freshness
Listen to their echo in the valley.*

Contents

<i>"Lahainaluna"</i>	2
Executive Summary	4-5
Lahainaluna High School	6-7
LHS Foundation	
History & Financial Results	8-9
Vision, Values & Mission	10-11
Grant-Making & Strategic Goals	12-13
Committees	
Athletics	14-17
Arts & Culture	18-21
Scholarships	22-23
Alumni & Community Relations	24-25
Grants & Sponsorships	26-27
History & Cultural Preservation	28-29
Development, Marketing & Communications	30-31
Finance	32-35
People	
Board & Committees	36-37
Advisors	38
Staff & Volunteers	39



David Malo

Executive Summary

Lahainaluna High School Foundation is an important organization dedicated to enhancing the educational experience at Lahainaluna High School. Since 2000 the Foundation has raised over \$4.4 million and provided improvement projects that have contributed greatly to the success of the school. We realize that with constrained resources available from the Hawai'i Department of Education, our community must step up and foster partnerships and plans that will provide a superior high school experience for all Lahainaluna students, and help them excel in all kinds of ways.

This report is a culmination of many hours of hard work from our Board of Directors, committee members, staff and facilitator. It is intended to provide a “road map” as we navigate the next 10 years. This strategic plan will give an in depth look at our history, vision, goals, values, people, committees, finances and plans.



In September 2005, the Lahainaluna High School Foundation held its first strategic planning workshop. This was a one-day event where our Board of Directors worked together to establish goals, update our mission, and talk about where we were, and where we wanted to go. We knew one thing, and that was there were some exciting opportunities ahead.

Several years later, we looked back and realized that the goals we had set were largely accomplished.

- *Friends of the Library Endowment Fund reached the 100 book-per-year level*
- *Scholarship levels were growing*
- *Grants and sponsorships were increasing*
- *The web site was up and running*
- *We were partnering with other west side schools and the tutoring program*
- *We had great success working with Mercedes-Benz as a beneficiary of its Championship in Kapalua*

The question before us was: What do we need to do now to further advance our efforts?

In 2007 we took a bold step by announcing two important projects:

- *Plan, fund and build a multi-purpose stadium at Lahainaluna High School*
- *Enhance the arts with an on-campus visual & performing arts and cultural center, known as **Ka Malu 'Ulu***

Substantial progress has already been achieved on both. During David Malo Day 2007, local businessman and LHS alumnus Roy Sakamoto announced a \$1.0 million gift for the stadium project by part-time resident Ms. Sue Cooley. By June 2008, that amount had increased to over \$3.0 million. Conceptual designs have been completed for the stadium and fundraising efforts are under way. At David Malo Day 2008, the **Ka Malu 'Ulu** committee unveiled an entirely renovated Boarders Field stage and expanded earthen platform, **Kahua**.

Lahainaluna High School

Lahainaluna High School is the oldest school west of the Rockies. Founded in 1831, it is the place where public education in Hawai'i began. It is the *only public school in the nation* with a boarding program and the first school with a Hawaiian alma mater. Today Lahainaluna High School serves approximately 1,000 day and boarding students with a rich variety of courses. It is known state-wide as having one of the finest agriculture programs.

As the only public high school in West Maui, the entire community benefits from its people and resources. Throughout the school's history, we have witnessed the capital of Hawai'i moving from Lahaina to Honolulu, the closing of the plantations, the growth of tourism and numerous other changes in our community. Lahainaluna still stands as a beacon above Lahaina, and our community and alumni continue to share the deepest respect for the school's culture and traditions.



LHS motto *O keia ke kukui pio ole I ka makani o Kauaula*
This is the torch that the winds of Kauaula cannot extinguish



Nana i ke Kumu. Look to the source.

Lahainaluna High School is indeed one source of knowledge, rooted in our Hawaiian history and culture; one that helps to define us. Through knowledge comes wisdom.

We are an island community, ohana, with Hawaiian values at the core of our existence and origin: Respect, integrity, work ethics, *malama* the 'aina (be stewards of our islands), *kuleana* (responsibility), and *aloha*.

Founded in 1831 under humble beginnings supported by the strength of missionary teachings and Hawaiian wisdom, Lahainaluna High School, as she enters the 21st century, is challenged to balance her unique, rich history with the progress that comes with the “net” generation.

As the School continues to strive for excellence and prepares its students with skills and knowledge needed to be participatory citizens in the global society, she will support efforts to understand, research and sustain our sense of place, sense of community, and sense of citizenship. Our students will be immersed in the values of our Hawaiian host culture and those of our democratic society.

LHS Foundation

Lahainaluna High School Foundation was formed in 2000 as a 501(c)(3) organization with the vision of improving the educational experience of the school through a framework that would allow donors the ability to give through a tax-exempt organization outside the realm of the Hawai'i Department of Education. We envisioned that all fundraising efforts for the benefit of the school could flow through the Foundation.

The idea for creating the Foundation came through the efforts of many people, most notably Brian Kelly, then Band Instructor; Mike Nakano, Principal; and Charlie Fox, a retired attorney living in West Maui. Rob Shelton was asked to serve as its first president.

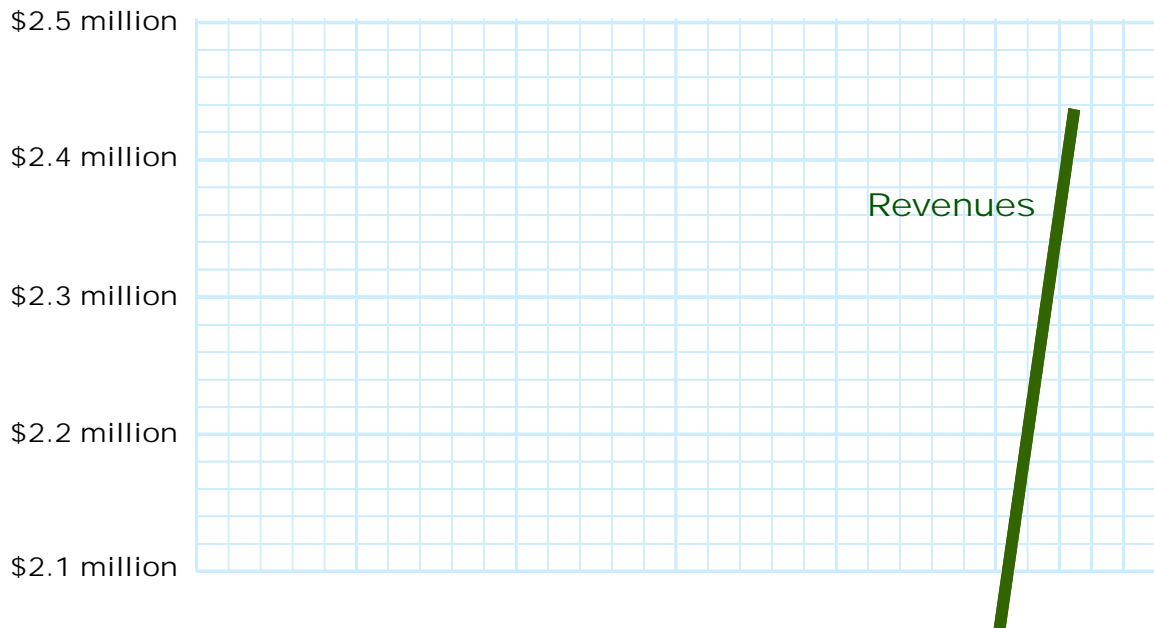
Since the inception, the Foundation has

- *Partnered with the Hawaii Community Foundation to form scholarship, giving programs, and endowment funds that will help to secure the long-term future of the Foundation;*
- *Set up a legacy program with Bank of Hawai'i Trust; and*
- *Established a means that allows individual donors to direct their gifts to the departments, clubs, or projects of their choice.*

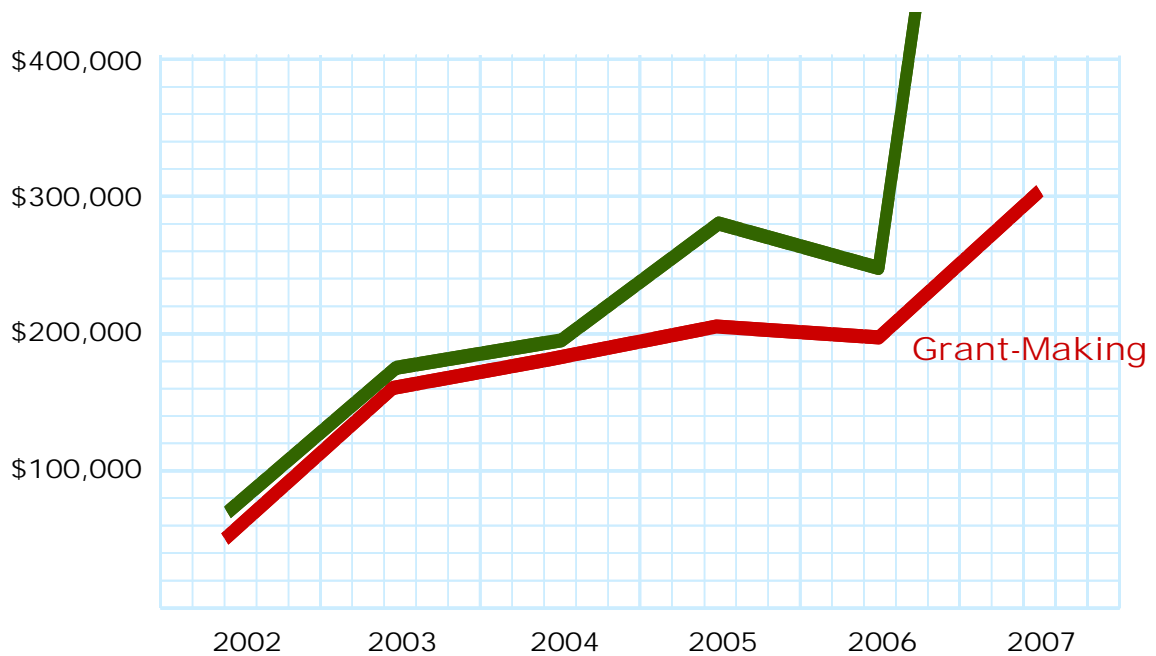
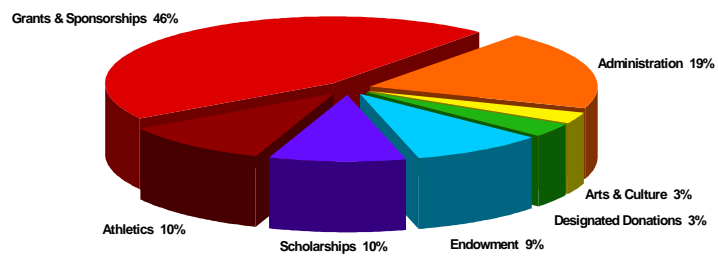
As the Foundation grew, we saw the need for an Executive Director. Diane Delos Reyes has served as our Executive Director the past 5 years and currently operates out of space at 505 Front Street donated by Trinity Property Consultants. As our organization continues to grow, we look forward to developing headquarters on campus.

We believe that service to the Foundation is an important learning experience for our students, and thus we have a student who serves on the Executive Board as Secretary. Serving on the Board in an executive capacity teaches students the value of working with a “real life” organization dedicated to giving back to the school. Our past student representatives have gone on to wonderful college experiences and have been equally successful in careers such as journalism, business, and engineering.

The Foundation relies on many dedicated volunteers from many different constituencies – community, alumni, school staff, and students. The continued success of the Foundation will be determined by these individuals and their continuing support.



Distribution of Grants, 2002-2007



Vision

I 'ike po'okela na 'opio a pau o Lahainaluna

**A superior high school experience
for all Lahainaluna students**

Values

***Loina
Hoihi
Ho'oha'ahea
Kupaa
Pio ole
Kaiaulu***

**Tradition
Respect
Honor
Dedication
Commitment
Community**

Mission

*E kako’o I ko Lahainaluna ma o na mea
e ho’olako pono ai*

SUPPORT the Lahainaluna school community
by providing opportunities and resources

*E kokua I ka malama ‘ana a me ka ho’omau ‘ana
i ko Lahainaluna mo’aukala, kona
mo’omeheu, a me kona mau lolina*

ASSIST in preserving and perpetuating
Lahainaluna’s unique
history, culture and traditions

**LAHAINALUNA
HIGH SCHOOL
1831**

Foundation Grantmaking 2002-2007

\$400,000 Grants & Sponsorships

Bio Tech Classroom
Edline /Technology Classroom
Lahainaluna Technology Lab
Graphics Class
Ka Leo
Novanet Online Tech Program
East Computer Lab
LHS Band
LHS Cheerleaders
Japanese Club
French and Spanish Club
LHS Voyaging force 25 Boat
PAAC
National Honor Society
Academy of Hospitality and Tourism
Woodshop
Agriculture Program - Makana Aloha
Teachers/ advisors training programs
Health & Medical Pathways Program
Science class
Reflections

Boarding Department
LHS Boarders
Lahainaluna Tutoring Program
Lahaina Tutoring Program
Library books
Audio visual equipment
Alternative Learning Center
Part time teacher
Classroom Construction
Kam III Elementary playground resurfacing
Lahaina Intermediate Renaissance
Foundation/Library
Princess Nahi'ena'ena Elementary
Sponsorship for Lahainaluna 175th anniversary
Archives Committee, arborist grant
Graduation Security
Campus Map

\$225,000 Athletics

Baseball
Basketball
Bleachers for football field
Football
Golf Team
Soccer
Softball
Locker room

Scoreboard
Tennis/Wrestling
Stadium Track Design/Plans
Gym Banners
Therapeutic Modality
Athletic Training Room

\$160,000 Scholarships

\$110,000 Arts & Culture

Kahua on Boarders' Field
Art Program
Hawaiiana

\$895,000 Total

(Right) Boarders helping with Kahua.
Turn to page 19 to see the completed Kahua.



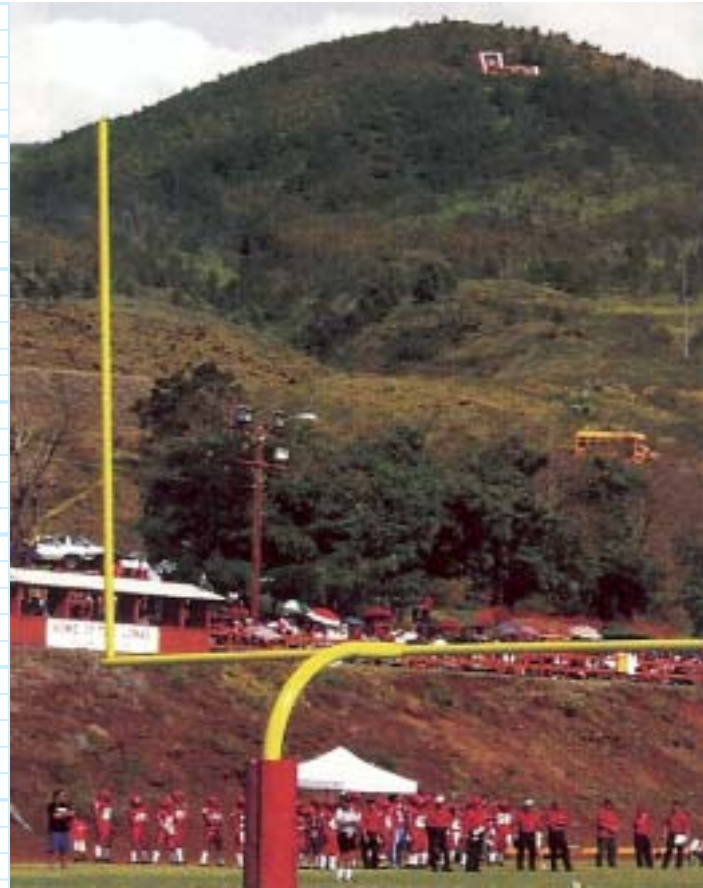
Foundation Strategic Goals 2008-2019

Achieve organizational stability & sustainability

- *Develop the people – Board, staff, other volunteers necessary to support mission and vision*
- *Establish an on-campus Foundation office for closer ties between the school, volunteers and alumni*
- *Build development capacity to support planned projects*
- *Ensure appropriate financial controls, checks & balances*
- *Add to endowment for grant-making and operations*

Advance major projects

- *Track, field & stadium: Raise additional funding – \$15+ million – to realize the planned facility*
- *Ka Malu ‘Ulu: Determine feasibility, develop concept plans, estimate required funding, develop lead gifts*



Organize an LHS Alumni Association

- *Broaden the support for Foundation projects among alumni everywhere*
- *Identify ways to serve alumni effectively*

Participate within the local community

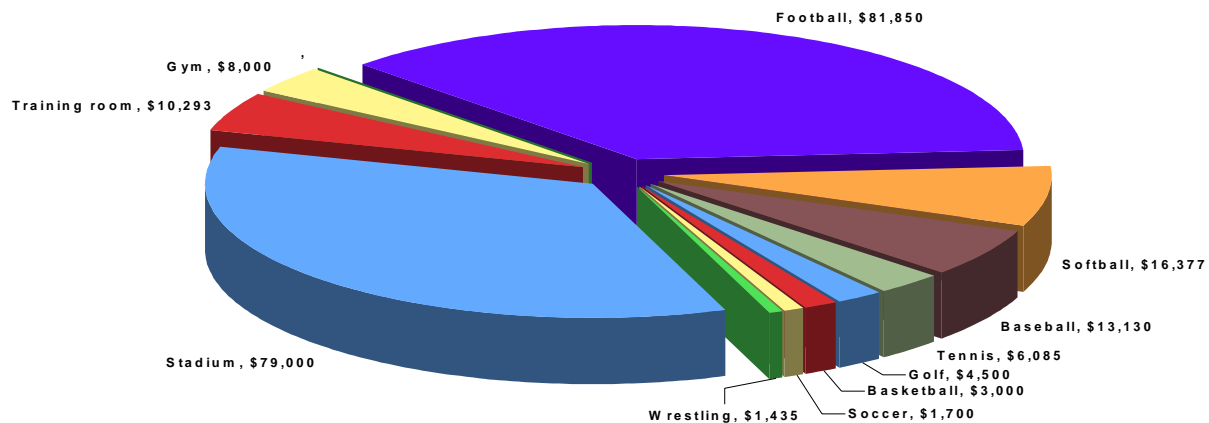
- *Enhance the presence, voice and platform in the community*
- *Strengthen existing and create new key partners*

Athletics

The **Stadium Athletic Committee** was formed to plan the stadium itself – how it was to be configured and what would be included given the physical parameters for the area. For the most part, the Stadium Athletic Committee's task have been accomplished

The **Stadium Development Committee** was formed in February 2008 to raise funds and develop public awareness for the LHSF stadium project.

Athletics Grants, 2002-2007



Stadium Athletic Committee

Mark Tillman, Chair	Parent, Board of Directors
Rob Shelton	Parent, Board of Directors
Michael Nakano	Principal, Board of Directors
Joe Balangitao	Former Athletic Director
Bobby Watson	Farm Foreman, Football Coach
Clifton Akiyama	Alumnus
Walter Chihara	Parent
Lanny Tihada	Alumnus, Parent & Coach
Bill Green	Parent
Dennis Harmon	Alumnus
Kim Ball	Parent, Coach
Student volunteers	





(Above) **Current track facilities – rocks, many puka, and weeds.**



(Left) **New softball scoreboard.**



LHS motto *O keia ke kukui pio ole I ka makani o Kauaula*
This is the torch that the winds of Kauaula cannot extinguish

Goals for Athletics

1-year goals

2008-2009

- Advance major projects:
 - Full-time paid staff dedicated to fund-raising
 - Additional funding (\$3 million) achieved within a year from now (September 2009), bringing the total raised to \$6 million

5-year goals

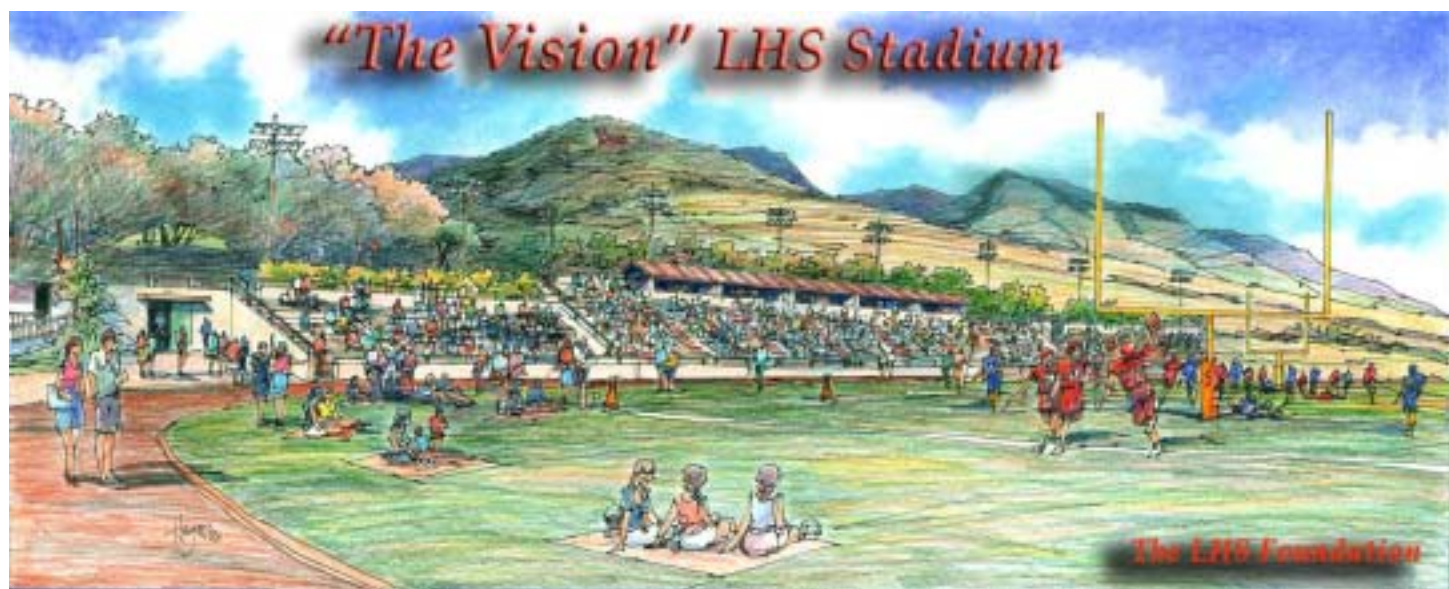
2010-2014

- Advance major projects:
 - Necessary funding has been raised for stadium/track
 - The stadium is built, or at the very least, ground is broken

10-year goals

2015-2019

- Advance major projects:
 - The stadium is built



Stadium Development Committee

Jeff Rogers, Chair

Parent, LHSF Development
Coordinator

Lena Kanemitsu

Alumna, Parent

Myrna Ah Hee

Alumna, Parent

Richard Nishihara

Alumnus, Board of Directors

Tanya Arakawa

Alumna, Parent

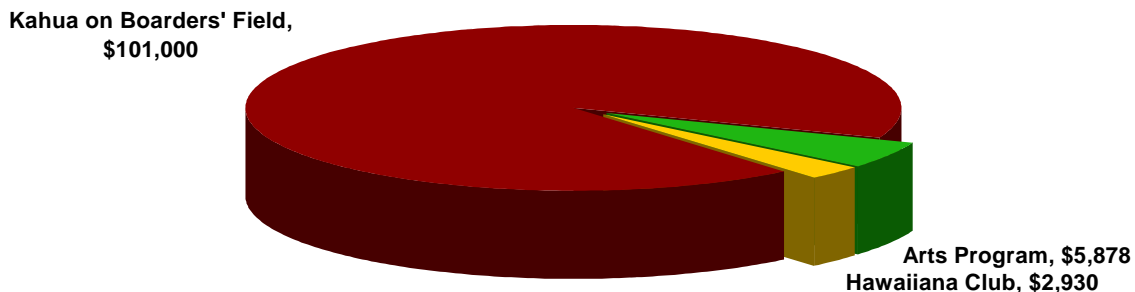


Arts & Culture

The **Arts and Culture Committee** was founded in 2005 to preserve and perpetuate the study of the arts and Hawaiian culture in the unique physical and historical setting of LHS. In 2007, the Committee partnered with LHS, the Lahaina community and corporate donors to renovate and rebuild the Kahua, the performance stage on Boarders Field which is the site of David Malo Day. Appropriately, the theme of David Malo Day is "giving back" and Kahua was brought into being by many generous donors.

The Committee hopes that the Kahua will indeed be the platform and foundation for the greater goal of a Lahainaluna Arts Center. Ka Malu 'Ulu, named for the nurturing and preserving shade of the breadfruit tree, will be the home for visual and performing arts programs and include a performing art center, art gallery, and various multi-purpose spaces. As with the Kahua, we look forward to Ka Malu 'Ulu connecting the school and community, kama'aina and visitor, past and future.

Arts & Culture Grants, 2002-2007



Arts and Culture Committee

Darcel Gilbert, Chair	Board of Directors
Diane Delos Reyes	Executive Director, Parent
George Kahumoku, Jr.	Faculty & Artist, musician, 3-time Grammy Awards Winner
Lois Reiswig	Community
Lori Gomez	Faculty & Alumna
Louisa Shelton	Parent & Alumna
Mark LeDoux	Community
Macario Pascual	Alumnus, Parent, Tennis Coach, Artist
Penny Wakida	Former Faculty & Parent

Ka Malu 'Ulu

Malu – *Shade, shelter, protection, peace*
 'Ulu – *Breadfruit; Ulu – Grow, spread, increase*

Kahua is the platform and foundation for the greater goal of **Ka Malu 'Ulu**, an arts and culture center consisting of a 350-seat theatre, art gallery, practice studios, workshops, classrooms and a Hawaiian garden. Ka Malu 'Ulu at LHS will be a showplace and signature learning center for Hawaiian culture and tradition. A site for kupuna of all arts, old and new, to teach and share their precious knowledge, it will be a vital venue to bridge into the 21st century.

As with the Kahua, Ka Malu 'Ulu will nurture the roots of the past to establish and strengthen our present and future, connecting kama'aina, malihini (visitor), school and community, in sharing the "sense of place" that is Lahainaluna.

Vision By honoring the work that came before and creating a place of shared discoveries through art, Ka Malu 'Ulu advances *lokahi*.

Mission Ka Malu 'Ulu creates opportunities and places to explore and celebrate the academics, art and culture of Lahainaluna.

Values	Ho'omahua 'ohana	<i>Community</i>
	Ike pono	<i>Righteousness</i>
	Malama	<i>Preservation</i>
	Ho'okumu 'oihana	<i>Creative process</i>
	Ho'ihi	<i>Respect, reverence</i>
	Lokahi	<i>Harmony</i>



(Right) **The completed Kahua.**
 (Above) **Before renovation.**





Goals for Arts & Culture

1-year goals

2008-2009

- Advance major projects:
 - Complete payment for Kahua with other grants
 - Determine the feasibility of Ka Malu 'Ulu (KMU) - Input from community leaders as well as donor potential
 - Survey the community - For support and usage
 - Scope out site and facility - Coordinate with other projects; general plan for LHS
 - Develop and implement a publicity campaign
 - Develop and implement a fund-raising plan
 - Identify the best ways to support LHS arts & culture curriculum
- Achieve organizational stability & sustainability:
 - Create an Advisory Board - Compile list of possible individuals
 - Expand the current committee
- Participate within the local community:
 - Organize activities - Plein-air event, tours, film programs, music/cultural events
 - Develop partnerships - MACC, other school programs, hotels, Hawaii DOE

5-year goals

2010-2014

- Advance major projects:
 - Raise the funding for KMU design
 - Develop designs
 - Launch capital fund-raising drive for KMU construction
 - Continue to support LHS arts & culture program (curriculum, faculty)
 - Conduct tours of LHS and proposed KMU site & facilities

10-year goals

2015-2019

- Advance major projects:
 - Build & open KMU - Theater, studios, practice spaces, art gallery, garden

(Right) **Blessing the renovated Kahua, David Malo Day 2008.**

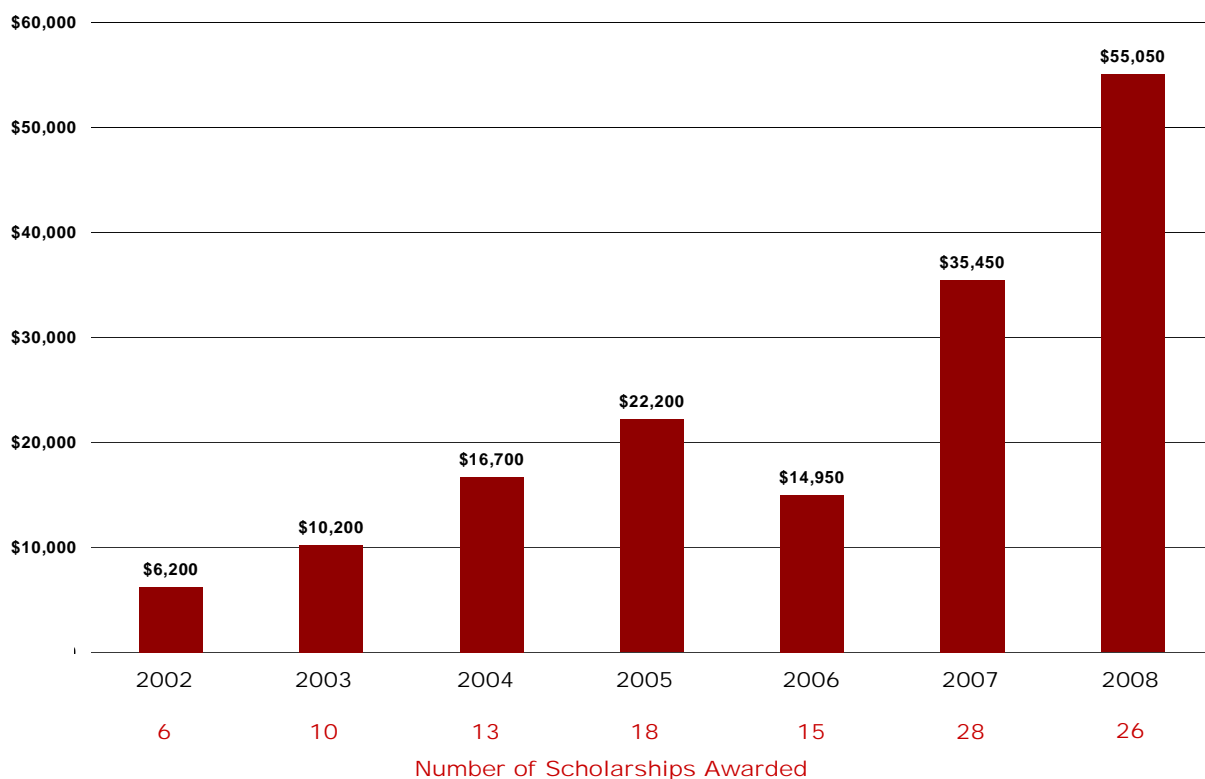


Scholarships

The **Scholarships Committee** formed in 2001 to administer and award scholarships from donations to the Foundation to LHS applicants.

Since its inception the Committee has awarded \$160,450 to LHS seniors who are continuing their education. In 2006, scholarships have also been available and awarded to LHS teachers for continuing education.

Scholarship Awards, 2002-2007



Scholarships Committee

Andrew Kutsunai, Chair	Former LHS Faculty, Board of Directors, Parent
Penny Wakida	Former LHS Faculty, Parent
Tonata Lolesio	Alumna
Lydia Saribay <i>to be named</i>	Parent Senior counselor



LHS motto *O keia ke kukui pio ole I ka makani o Kauaula*
This is the torch that the winds of Kauaula cannot extinguish

Goals for Scholarships

1-year goals

2008-2009

- Raise \$14K in addition to the current \$50K for scholarships from:
 - Class reunions – pledge program
 - Business community
 - Individual donations

5-year goals

2010-2014

- Raise \$70K per year in addition to the current \$50K for scholarships

10-year goals

2015-2019

- Be able to offer scholarships to every graduate seeking higher education
 - \$140K annually: 140 students (70%) @ \$1K each
 - \$1 million endowment dedicated to scholarships
 - Graduates are encouraged to return and teach here
 - More scholarships to support teachers and their continuing education



Alumni & Community Relations

The purpose of the **Alumni & Community Relations Committee** is to encourage our alumni and the community to participate and contribute to the needs of Lahainaluna High School through the Lahainaluna High School Foundation, using the media, newsletters, and public relation appearances at reunions and public functions.



Alumni & Community Relations Committee

Alexander Ross, Chair

Myrna Ah Hee
Leslie Hiraga

Board of Directors,
Alumnus, Parent
Alumna, Parent
Alumna, Staff, Parent



LHS motto *O keia ke kukui pio ole I ka makani o Kauaula*
This is the torch that the winds of Kauaula cannot extinguish

Goals for Alumni & Community Relations

1-year goals

2008-2009

- Provide brochures, materials and resources for available for classes to organize their reunions
- Participates in alumni events (including the mainland)
- Participate within the local community so that organizations, groups and citizens in West Maui know about the Foundation and its goals

5-year goals

2010-2014

- Achieve organizational stability & sustainability:
 - *Committee is expanded to include representatives from 60s, 70s, 80s, 90s, 00s classes*
 - *All reunions participate with the Foundation*
 - *Planned giving program is up and running*
 - *Database with 100% of alumni is completed*
- Organize an LHS Alumni Association:
 - *Alumni on mainland and around the world are aware of and participate with the Foundation*
 - *Create an Alumni newsletter*

10-year goals

2015-2019

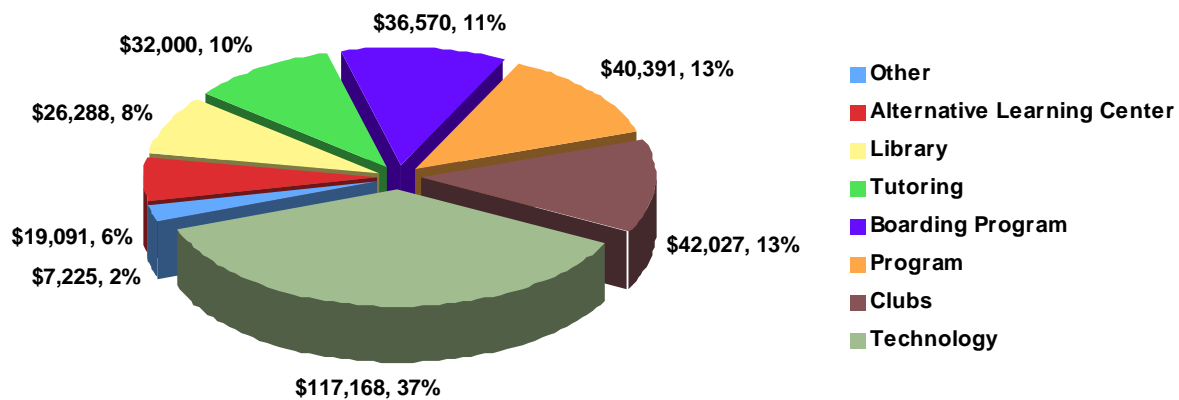
- Achieve organizational stability & sustainability:
 - *Every class knows about and participates with the Foundation*
 - *Alumni membership dues and gifts provide a stable and sustaining source of funding, e.g., toward the Endowment*
 - *Documentary*



Grants & Sponsorships

The **Grants & Sponsorships Committee** evaluates proposals for funding to many vital programs and projects at LHS such as program, technology, tutoring, boarding program, the Alternative Learning Center, and extracurricular clubs. As an area of grant-making, Grants & Sponsorships represents the largest area to-date of Foundation activity.

Grants & Sponsorship Awards, 2002-2007



Grants & Sponsorships Committee

Michael Nakano, Chair	Board of Directors,
	LHS principal
Glen Kosaka	LHS alumnus
Lee Munemitsu	LHS alumnus
Ruth Hill	LHS teacher
Student representatives	



Goals for Grants & Sponsorships

1-year goals

2008-2009

- Formalize guidelines and a calendar of deadlines for grant requests

5-year goals

2010-2014

- Achieve organizational stability & sustainability:
- Achieve an annual level of \$100,000 for grants

10-year goals

2015-2019

- Achieve organizational stability & sustainability:
- Establish an annual budget for grants, e.g., \$150,000 per year



History & Cultural Preservation

In recognition of Lahainaluna's treasured past, the **History & Cultural Preservation Committee** is the liaison between LHS's existing Lahainaluna Historical Preservation Committee (also known as the Archive Committee) and the Foundation.

Both committees have the mission to preserve the history and culture of LHS. A current shared activity is the naming of the buildings on campus and providing signage for the buildings.



History & Cultural Preservation Committee

Susan Yap, Chair
Nancy Cross

Board of Directors, LHS staff, parent
Board of Directors (Vice President), LHS parent

LHS motto *O keia ke kukui pio ole I ka makani o Kauaula*
This is the torch that the winds of Kauaula cannot extinguish

Goals for History & Cultural Preservation

1-year goals

2008-2009

- Advance major projects:
 - Buildings are named
 - Partner with the Academy of Hospitality & Travel
 - On-going acquisition of artifacts
 - Continue school partnership with Archival Committee
- Participate within the local community:
 - Partner with Lahaina Restoration Foundation

5-year goals

2010-2014

- Advance major projects:
 - Plaques for named buildings

10-year goals

2015-2019

- Advance major projects:
 - David Malo Heritage Trail and viewing vantage
 - Historical center on campus
 - Documentary



Development, Marketing & Communications

The **Development Committee** will be responsible for implementing annual giving and legacy programs, and identifying and communicating with major donors who can provide resources to the Foundation.



Development, Marketing & Communications Committee

Rob Shelton

Board of Directors (President), Parent

Jeff Rogers

Parent, LHSF Development Coordinator

(Committee in formation)

Goals for Development, Marketing & Communications

1-year goals

2008-2009

- Form a Development Committee with individuals representing various LHS and community constituencies
- *Establish fund-raising, marketing and communications goals for the committee*

5-year goals

2010-2014

- *To be established by the committee*

10-year goals

2015-2019

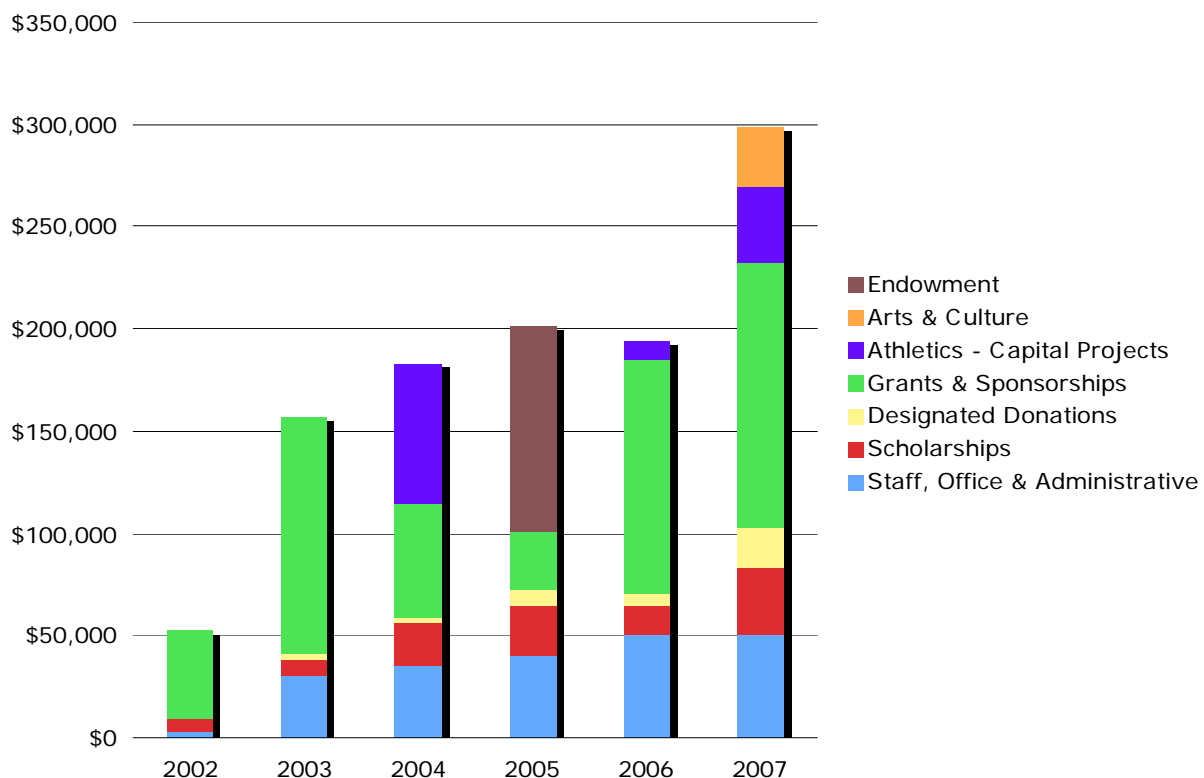
- *To be established by the committee*



Finance

The **Finance Committee** assists the Foundation staff in the preparation of financial projections, the selection and implementation of accounting standards and procedures, and the selection of investment accounts. The committee advises the Board of Directors on other finance related matters.

Summary of Grants and Expenses, 2002-2007



Finance Committee

Walter Vierra, Chair
Lester Nakamoto
Ivy Huerter

Board of Directors, Alumnus
Board of Directors, Alumnus
Board of Directors (Treasurer), Alumna, Parent

Financial Principles

The LHS Foundation, through its Finance Committee is committed to prudent financial management and good stewardship of its assets. In order to accomplish these goals the Foundation only grants monies that it already has or has been guaranteed, keeps its operational expenses to a minimum, and chooses grants that impact the largest proportion of its stakeholders.

Assumptions about the Future

The Finance committee recognizes that the Foundation has been fortunate to secure the funding it currently has and that funds will likely be less available in the short term because of the current economic climate. The Finance Committee would like to see the Foundation diversify its funding sources, increase donations from alumni, and explore alternative funding sources such as grants.





LHS motto *O keia ke kukui pio ole I ka makani o Kauaula*
This is the torch that the winds of Kauaula cannot extinguish

Goals for Finance

1-year goals

2008-2009

- Implement controls, identify plans & establish funding:
 - Institute more formal financial controls, e.g., committee project disbursements, overall operations
 - Ensure adequate coverage for Directors and staff
 - Plan to cover the shortfall created by the completion of the 5-year Intrawest settlement funding
 - Establish funding budget for grants and other program areas
 - Move Treasury into the office (1-2 year goal)
 - Create a succession plan for Executive Director

5-year goals

2010-2014

- Achieve organizational stability & sustainability:
 - Additional staff member; employees (as opposed to contractors)
 - Additional revenue streams
 - Endowment at \$1million – generates \$50K for operations

10-year goals

2015-2019

- Achieve organizational stability & sustainability:
 - Endowment fund to cover all operating expenses
 - Substantial cash flow from multiple sources; not dependent on any one source of funding
 - Message to donors: “We pass 100% of donations to program”
 - Office with fully paid staff

Board of Directors

The LHS Foundation **Board of Directors** is represented by a diverse group of community members, business leaders and professionals, school staff and administration, students and alumni.

Our board members complement each other with a broad range of knowledge and understanding in many disciplines, but we do have one thing in common: our sincere desire to see Lahainaluna High School excel in all areas.

We place a high priority on fiscal responsibility and supporting programs and activities that will provide our students with a superior high school experience. We believe that the students of today will be tomorrow's leaders and we look forward to their participation in making Lahainaluna High School an even better place in the future.

2008 Board of Directors

Rob Shelton, *President* Parent

Nancy Cross, *Vice President* Parent

Ivy Huerter, *Treasurer* Alumna, Parent, Staff

Andrew Kutsunai, *Scholarship Chair* Former Faculty, Parent

Michael Nakano, *Grants & Sponsorships Chair* Principal

Alexander Ross, *Alumni and Community Relations Chair* Alumnus, Parent

Darcel Gilbert, MD, *Arts and Culture Chair* Lahaina community

Walter Vierra, Esquire, *Finance Chair* Alumnus

Mark Tillman, *Athletics Chair* Parent

Susan Yap, *History & Cultural Preservation Chair* LHS Staff, Parent

Lester Nakamoto Alumnus

Richard Nishihara Alumnus

Goals for Board of Directors

1-year goals

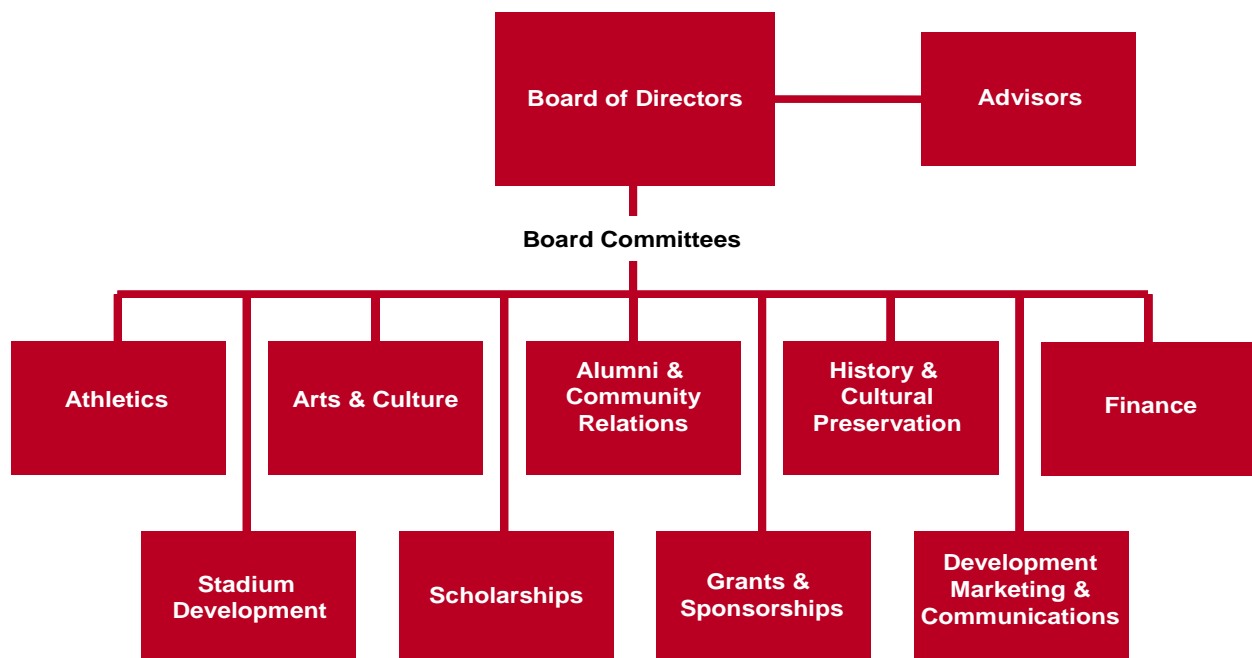
2008-2009

- Achieve organizational stability & sustainability:
 - *Board composition and recruitment:*
 - Develop and implement a process for identifying and recruiting new Board members*
 - Develop orientation program & materials for new Board members*
 - *Assessment*
 - Implement a process that enables the Board to comment on the strengths and weaknesses of the Board's performance*
 - Develop and implement recommendations based on Board assessment*

5-year goals

2010-2014

- Achieve organizational stability & sustainability:
 - *Strategy review:*
 - Plan and hold a Board retreat*
 - Evaluate the Foundation's progress toward this plan's goals*
 - *Conduct a comprehensive review:*
 - Vision, mission and values*
 - Fund-raising and grant-making*
 - Organization structure, staffing and systems*



Advisors

The Foundation's **Advisors** are individuals who are influential community members who have a strong desire to see Lahainaluna High School succeed.

Advisors are ambassadors for the Foundation, and serve the important function as sounding board for ideas and suggestions. The Foundation holds one to two social functions per year in which Advisors gather to receive an update and lend their ideas to the Foundation.

Goals for Advisors

- Achieve organizational stability & sustainability:
 - Seek their advice and input into various Foundation endeavors
 - Add members to this list as the Foundation deems necessary
- Participate within the local community:
 - Continue to use their individual influence in the community

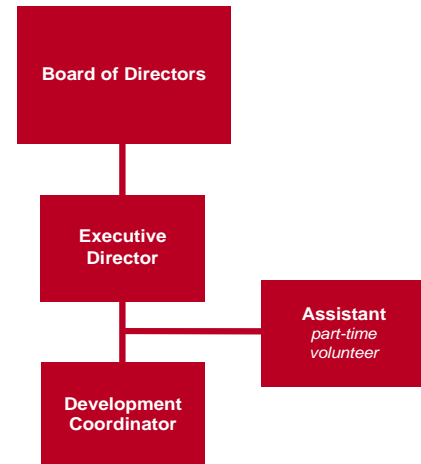
2008 Advisors

Karen Ancheta	● 1997 graduate and creator of the LHS Foundation web site.
Henry “Bruno” Ariyoshi	● Long time teacher, coach and administrator at Lahainaluna.
Roz Baker	● State Senator and Chairperson for the powerful Ways and Means Committee.
Brian Blundell	● Local Businessman and former State Representative; Parent.
Walter Chihara	● Ardent Lahainaluna supporter and writer for the Lahaina News.
Maggie Cole	● Community member and supporter. Husband David Cole is the Chairman and CEO of Maui Land and Pineapple Company.
Pat and Richard Endsley	● Retired educators and leaders of the West Maui complex Tutoring Program.
Charles Fox III	● Retired Attorney who set up the framework for the Foundation. Mr. Fox was one of our first Board Members. Class of 1941.
Sam Kadotani	● Respected Community Member known as the “Honorary Mayor of Lahaina.” Alumnus.
Robert Kawaguchi	● Retired LHS Athletic Director and long-time teacher. Respected community member. Class of 1948. Parent.
Betty Sakamoto	● Leading Realtor with Sakamoto Properties in West Maui who was instrumental in obtaining large funding for our proposed stadium project. Father-in-law Hiroshi, Class of 1929. Husband Roy, Class of 1960. Parent.

Staff & Volunteers

By principle as well as fiscal prudence, LHSF has kept **Staff** to a minimum with independent contractors. Since the Foundation's inception, Diane Delos Reyes has served as Executive Director. In 2008, long-time volunteer Jeff Rogers was appointed to the newly-created role of Development Coordinator to oversee the many LHSF fund-raising initiatives.

With the announcement of Diane's intention to retire in September 2009, LHSF leadership will undertake the process of identifying a new Executive Director.



Goals for Staff

1-year goals

- 2008-2009
- Strive for organizational stability & sustainability:
 - Plan and implement a search process for a new ED to begin September 1, 2009

5-year goals

- 2010-2014
- Achieve organizational stability & sustainability:
 - Assess the need for additional staff (e.g., Development Director, full-time paid Assistant) against available resources

Volunteers are vital to the work of the Foundation, and serve on many committees and in many capacities. In the office, long-time West Maui resident and LHSF volunteer Jackie Kelly assists Diane and Jeff in many ways. Longer-term, the Foundation will need to assess the need for paid full-time assistance.

Goals for Volunteers

1-year goals

- 2008-2009
- Strive for organizational stability & sustainability:
 - Seek their advice and input into various Foundation endeavors
 - Participate within the local community:
 - Continue to use their individual influence in the community

5-year goals

- 2010-2014
- Achieve organizational stability & sustainability:
 - Continue to recruit and develop volunteers to assist the Foundation in its many initiatives



Lahainaluna High School Foundation

P.O. Box 11617, Lahaina, HI 96761

Phone 808-661-5332 Fax 808-661-1737

LHSFoundation@hawaiiantel.net

www.lahainalunahighschoolfoundation.com



Perpetuating the torch of excellence